

The 41st Annual Zilker Summer Musical

BIG RIVER

The Adventures of Huckleberry Finn



July 10 - August 15, 1999

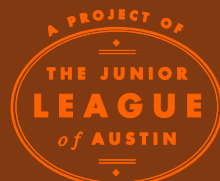
Music and Lyrics by
ROGER MILLER

Book by
WILLIAM HAUPTMAN
(adapted from the novel by Mark Twain)

ZILKER
THEATRE
PRODUCTIONS

Beverly S. Sheffield Zilker Hillside Theater

This production is funded in part by the City of Austin,
under the auspices of the Austin Arts Commission.



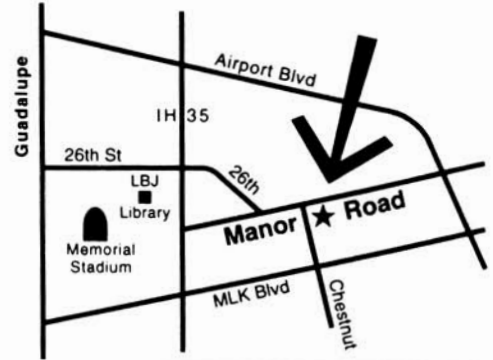
BIG RIVER is presented through special arrangement with The Rodgers & Hammerstein Theatre Library, 229 West 28th Street, 11th Floor, New York, NY 10001.



DRIVE IN
SERVICE >>>

SAME DAY SERVICE

'til 12 Noon Monday-Friday



TUESDAY & THURSDAY SPECIALS

Laundered Shirts
\$1.09 cents Each
Two shirts or more

Men's & Ladies'
2-piece suits or plain dresses
\$5.79

Plain Blouses, Shirts,
Pants & Skirts Dry Cleaned
\$2.99

HOME STEAM LAUNDRY & CLEANERS

A DAVIS FAMILY TRADITION SINCE 1915
478-2586

2301 Manor Road



Mon-Fri, 7:00am-6:30pm
Saturday, 8:00am-12:30pm

DOWN THE MISSISSIPPI

OR

ON LAKE AUSTIN

We Cater

Private and Corporate Functions
Weddings and Bar Mitzvahs
Theme Parties and Dinners
Complete Party Planning
Any Event Just for You !

A Catering

By Yoli

CUSTOM DESIGNS
FOR YOU

346-5560

Call for More Information

Zilker Theatre Productions
presents

BIG RIVER

The Adventures of Huckleberry Finn

Music and Lyrics by
ROGER MILLER

Book by WILLIAM HAUPTMAN

Adapted from the novel by Mark Twain

featuring
Mike Bradecich Virdell Williams, Jr.

with
Christina Dahlberg Katie Onken Scott Schroeder
Huck Huckaby Nicholas Rodriguez Larissa Wolcott
Mark Rosholt

and featured musicians
Wallace DePue Kelly McDaniel Bill Passalacqua Clay Towery

Directed by ROD CASPERS

Choreographed by
ACIA GRAY and DIERDRE STRAND

Musical Direction by
LYN KOENNING

Scenic Design by
J. RICHARD SMITH

Costume Design by
SHEILA HARGETT

Lighting Design by
ROBERT T. WHYBURN

Sound Design by
BILL MESTER

Properties Design by
VALERIE SADORRA

Hair/Make-Up Design by
TERESA MANCUSO

Executive Producer WILLIAM SHEFFIELD

This production is funded in part by the City of Austin, under the auspices of the Austin Arts Commission.

Big River, The Adventures of Huckleberry Finn is presented through special arrangement with
The Rodgers and Hammerstein Theatre Library, 229 West 28th Street, 11th Floor, New York, NY 10001.

EXECUTIVE DIRECTOR

Randall J. Storm

BOARD MEMBERS

John C. Perkins, President
Krin Brooks Perry, Vice President
Sheryl Kinlaw, Secretary
Stephen A. Laban, Treasurer

Joseph Bowen
Lisa R. Fisher
Janice Godwin
Catherine Hoey
Diana Latham
Lila Oshatz
Betty Boyd Pyle
Rick Richter
Harold E. Snyder
Rich Taylor

ADVISORY BOARD

Debbie Alfaro	Romeo Perez
E. Wayne Bachus	Gary Powell
Eric Behrens	Alice Roberts
Melissa Brackin	Cary Roberts
Amy Brees	Oscar Rodriguez
Dr. Rob Bugbee	Trey Salinas
Clementine Clarke	Bruce Salzer
Johnny Clarke	Eugene Sepulveda
Cissy Cooper	Beverly Sheffield
Jim Cross	Gwen Spain
Phyllis Dempsey	Charlie Stauffer
Rex Downing	Kerry Tate
Robert Emerson	Dori Thornhill
Vera Fischer	Davis Tucker
Gaye Fisher	Karen Wetterau
Jeff Friedman	Barbara Williams
Pati Fuller	Ann Yeakel
Arnold Garcia	Blake Yelavich
Rick Garcia	
Rita Garza	
Bob Gier	
Karen Haywood	
Janet Kahn	
Blanca Leahy	
Laurie Maccini	
Maline McCalla	
Paula Nadaline	
Ron Oliveira	
Nick Patras	
Ray Payne	

Message from
Zilker Theatre Productions



Welcome to the 41st Annual Zilker Summer Musical, **Big River, The Adventures of Huckleberry Finn**. Tonight you are witness to one of Austin's great summer traditions. A total audience of over 50,000 people, ranging in age from infant to grandparent, come to this event each year to enjoy high-quality, pay-what-you-may outdoor theatre. We are honored by your attendance and continued support.

The musical no longer receives City General Revenue funds and is now produced solely with funding raised by Zilker Theatre Productions (ZTP), a non-profit 501(c)(3) community organization. Thus it is only through the generosity of individuals like you and corporations that over \$150,000 is raised and this tradition continues. We are especially grateful to the Junior League of Austin and Austin's Art Commission whose generous financial and volunteer support make the musical possible.

We especially need your financial support as we retire a \$50,000 debt incurred in 1998 and appreciate your 1999 gift which is approximately 25% of the money required to produce the musical. While individual gifts range from a dollar to hundreds, the total amount allows ZTP to continue providing theatre at no-admission charge. Historically, the average donation per person has been less than fifty cents. Please, as you consider your donation tonight, recall what you pay for other forms of entertainment such as movies or video rental. Many agree, live theatre enjoyed by the whole family, is worth at least as much as these - perhaps more. Checks may be made payable to Zilker Theatre Productions.

Zilker Theatre Productions have tremendous dreams for the future and hope to include you. Your support ensures the Zilker Summer Musical will be enjoyed by the people of Austin, the state of Texas and individuals from around the world for years to come. We hope you will return year after year to share the excitement and magic of live theatre under the stars. Now, sit back, relax, and enjoy the Americana sights and sounds of **Big River, The Adventures of Huckleberry Finn**.

FORMER CAST AND FRIENDS MEMORIAL

The arts world has been devastated by many diseases from AIDS to Heart failure. The Zilker Summer Musical is not immune to these diseases. To honor individuals formerly affiliated with the summer musical, a memorial has been established. Former affiliates include:

Phil Allen ∞ Jim Barnes ∞ John Bustin ∞ Arturo Castillo
Dr. W. H. "Deacon" Crain ∞ Bettie Dahlberg ∞ Daniel Moncivias
Tucker Parmlee ∞ Joe Ryan ∞ Sean Somoskey ∞ Philip Stansbury

As a tribute to their memory, a tree was planted in the grove near the Beverly S. Sheffield Zilker Hillside Theater that posterity may know and appreciate those who have truly given their all to see this art form continue.

Thank you for honoring their memory.

The Zilker Summer Musicals

1959	Seventeen	1981	Fiorello!
1960	Girl Crazy	1982	The Most Happy Fella
1961	Anything Goes	1983	How to Succeed in Business Without Really Trying
1962	Wildcat	1984	Good News!
1963	Finian's Rainbow	1985	Guys & Dolls
1964	Brigadoon	1986	Miss Liberty
1965	Oklahoma!	1987	The Unsinkable Molly Brown
1966	The King and I	1988	Camelot
1967	Once Upon A Mattress	1989	Carnival
1968	A Funny Thing Happened on the Way to the Forum	1990	Annie
1969	The Music Man	1991	Into the Woods
1970	Oliver	1992	West Side Story
1971	Peter Pan	1993	Oklahoma!
1972	Hello Dolly	1994	Little Me
1973	You're a Good Man, Charlie Brown	1995	Joseph and the Amazing Technicolor Dreamcoat
1974	Paint Your Wagon	1996	Once Upon A Mattress
1975	1776	1997	Guys & Dolls
1976	Lil Abner	1998	South Pacific
1977	Fiddler on the Roof	1999	Big River
1978	Pippin		
1979	Man of La Mancha		
1980	Jesus Christ Superstar		

**Austin Roofers Supply
and
all of its employees
support the
Zilker Summer Musical**

834-4347



**"Shucks, Huck,
The *Real* Adventure
Is On The Colorado."**

**1-800-776-5272
www.lcra.org**



**Everybody Knows.
Everybody Goes.**



MAGNOLIA CAFES

**2304 Lake Austin Blvd.
478-8645**

**1920 South Congress
445-0000**

24 hours a day, 8 days a week.

Life is an adventure!

**Enjoy the experience, don't
toil over the chores.**

We know that work, school and other commitments can keep you and your family from enjoying special events like the Zilker Summer Musical. THE MAIDS® understand your need to get away, so let us help with the housework. That way, you'll have more time to enjoy life's adventures, both big and small. Call us today for a free estimate, and ask about our exclusive Healthy Touch® cleaning system.



An independent franchise of THE MAIDS International, Inc.

The Maids® 419-0021
Because You Have Better Things To Do.™

NOTICE:

Persons attempting
to find a motive
in this narrative
will be prosecuted;

Persons attempting
to find a moral in
it will be banished;

Persons attempting
to find a plot in it
will be shot.

By order of the author
MARK TWAIN



Mark Twain paid E.W. Kemble, an inexperienced young illustrator, \$1200 to visualize Huckleberry Finn for the first publication. (Several of E.W. Kemble's illustrations are scattered throughout this

CAST LIST

Male Roles

Huckleberry Finn	Mike Bradecich
Tom Sawyer	Nicholas Rodriguez
Slave Jim	Virdell Williams, Jr.
Pap Finn	Mark Rosholt
The King	Scott Schroeder
The Duke	Huck Huckaby
Judge Thatcher	Kelly McDaniel
Doctor	Robert Muraida
Sheriff Bell	Ronald Macklin
Harvey Wilkes	Clay Towery
Counselor Robinson	Brett McHargue
Silas Phelps	Bill Passalacqua
Ben Rogers	Grant McCollor
Jo Harper	Jason Yau
Simon	Doug Thompson
Dick	Kyle Walker
Hank	Mark Passarella
Andy	Jeremy Ellis
Lafe	Jeff Ferry
Young Fool	John Hashop
Male Ensemble:	Chad Deveaux, AJ Lewis,
	Fritz Johnson, John Steven Rodriguez
	Nathan Joiner, John Minnich,
	David Chapa

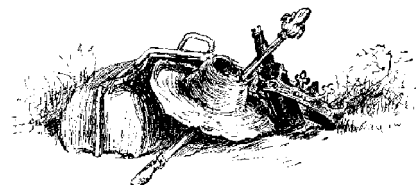
Female Roles

Miss Watson	Christina C. Dahlberg
Widow Douglas	Katie Onken
Strange Woman	Ann Richards-McKelvey
Sally Phelps	Sue Blankenburg
Alice	Gaye H. Fisher
Alice's Daughter	Marissa Joy Fisher
Mary Jane Wilkes	Larissa Wolcott
Joanna Wilkes	Jeanette Steiniger
Susan Wilkes	Lindsay Kaye Wells
Female Ensemble:	Jean Grace, Esperanza Biehle,
	Della Coleman, Melissa Joiner,
	Angie Ray, Haley Smith

Onstage Musicians	Wallace DePue, Kelly McDaniel,
	Bill Passalacqua, Clay Towery

Understudies

Huckleberry Finn - Grant McCollor, Tom Sawyer - John Hashop,
Pap Finn - Clay Towery, Sally Phelps - Jean Grace



SCENE SYNOPSIS

Setting

The entire production takes place on and around communities along the Mississippi River during the time of slavery in America.

ACT I

Scene 1 - St. Petersburg, Missouri

Muddy Water The Company

Do Ya Wanna Go to Heaven The Company

Scene 2 - Injun Joe's Cave

The Boys Tom and the Boys

Waitin' for the Light to Shine Huck

Scene 3 - Huck's Bedroom and Judge Thatcher's Court

Scene 4 - Pap Finn's Cabin

Guv'Ment Pap

Hand for the Hog Tom and The Company

Scene 5 - Jackson's Island

I, Huckleberry, Me Huck

Scene 6 - Illinois Shore

Muddy Water Jim, Huck and The Company

Scene 7 - On the River, south of St. Louis

The Crossing Featured Soloists, Slaves

River in the Rain Huck and Jim

Scene 8 - On the River, somewhere in Kentucky

When the Sun Goes Down in the South..Duke, King, Huck and Jim



On the Raft

ACT I

Scene 1 - Tennessee Shore

Scene 2 - In Bricktown, Arkansas

The Royal Nonesuch..... Duke and The Company

Scene 3 - Tennessee Shore

Worlds Apart..... Jim and Huck

Scene 4 - Hillsboro, Arkansas

Arkansas Young Fool

How Blest We Are..... Alice and The Company

Scene 5 - Wilkes Home in Hillsboro

You Oughta Be Here With Me Mary Jane, Susan and Joanna

Reprise: How Blest We Are..... The Company

Scene 5 - Wilkes Home in Hillsboro

Leavin's Not the Only Way to Go Huck, Mary Jane and Jim

Scene 6 - Wilkes Home in Hillsboro

Scene 7 - Arkansas Shore

Reprise: Waitin' for the Light to Shine Huck

Scene 8 - On a Farm near Hillsboro

Free at Last..... Jim and Slaves

Scene 9 - Phelps Farm near Hillsboro

Scene 10 - Phelps Farm near Hillsboro

Reprise: River in the Rain..... Huck and Jim

Reprise: Muddy Water..... The Company

ORCHESTRA

Piano/Conductor

Lyn Koenning

Violin

Wallace DePue

Bass

George Fahlund

Reeds

Jeremy Justeson

Guitar

Pablo Champion, Bill Passalacqua

Trumpet

David Cross, Mike Thomas

Trombone

Jon Blondell

Harmonica

Clay Towery, Kelly McDaniel

Percussion

Andy Bedoin

“Against the assault of laughter nothing can stand.” – Mark Twain

CAST BIOGRAPHIES



Esperanza Beihle



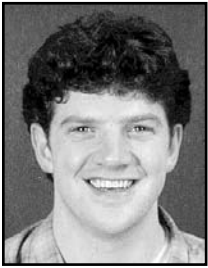
Sue Blankenburg

Esperanza Beihle (Ensemble)

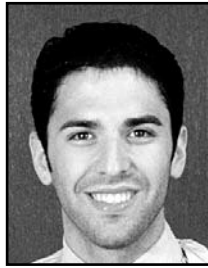
This is Esperanza's third summer musical following *Guys & Dolls* and *South Pacific*. Also, you may have seen her in Austin Musical Theatre's *Gypsy* or most recently *Fiddler on the Roof*. Some of her other favorite productions are *Grease* and *The Steadfast Tin Soldier*. Esperanza was a finalist in the National Search for the Walt Disney World Dancers.

Sue Blankenburg (Sally Phelps, Ensemble)

This is Sue's tenth appearance in the Zilker Summer Musical. She was a Featured Dancer, Cinderella's Wicked Step Sister, Lady Sagamore and a Hot Box Girl. Sue has been honored twice as Outstanding Female Ensemble Member both during *Carnival* and *Joseph and the Amazing Technicolor Dreamcoat*. Ms. Blankenburg's favorite role was Bonnie in *Anything Goes* at Live Oak Theater. She has been part of touring variety shows, industrial shows, show choirs and performs daily as a professional trainer and facilitator for the City of Austin.



Mike Bradecich



David Chapa

Mike Bradecich (Huckleberry Finn)

Mike moved to Austin in November 1998 and is excited to be debuting in *Big River*. Since graduating from Southern Illinois University at Carbondale two years ago, he has worked at various theatres in Illinois and Tennessee and toured the Midwest with Bridgework Children's Theatre. He spent last summer teaching theatre at a summer camp in Maine. His most recent role was as Petruchio in *Taming of the Shrew* at the Sam Bass Theater in Round Rock. If you are in kindergarten through fourth grade in the greater Austin area, that was him with *Dowser Dan's Side Show Circus*. Mike thanks his father for all his love and support.



Della Coleman



Christina Dahlberg

David Chapa (Ensemble)

David is pleased to be re-joining Zilker Theatre Productions again this summer after performing in last year production of *South Pacific*. This award winning solo vocalist is a graduate of the University of Texas at Austin. David has performed in numerous musicals in the Rio Grande Valley and was last seen in The State Theater production of *My Fair Lady*. Mr. Chapa is currently employed with the UT Austin.

Della Coleman (Ensemble)

Della is a Little Rock, Arkansas native where she spent most of her life. Ms. Coleman teaches kindergarten during the week for the Pflugerville School District and is Principal of the Children's Sunday School Department for David Chapel Missionary Baptist Church. *Big River*, is Della's Zilker Summer Musical debut although she has performed and produced shows for school and church. She also produces and directs student performances for Black History month. In her spare time, Della is a Girl Scout troop leader. She is a devoted wife and mother.



Chad Deveaux

Christina Dahlberg (Miss Watson)

Christina is no stranger to Zilker Park audiences having performed in 14 previous Zilker productions including *How to Succeed in Business Without Really Trying*, *Camelot*, *Carnival*, *The Unsinkable Molly Brown*, *Annie*, *Miss Liberty Good News!* and *Oklahoma!*. She truly believes the summer musical audiences are the greatest audiences in the world. Her favorite roles in other venues include City Her in Broadway Austin's production of *Gifts of the Magi* and the China Doll in Second Youth's *Steadfast Tin Soldier*.

Chad Deveaux (Featured Soloist, Ensemble)

Originally from Washington D.C., Chad majors in Mass Communications with a minor in Music at Huston-Tillotson College and is debuting in *Big River*. He has won numerous music awards, including first place at the Omega Psi Phi Classical Voice Competition at Mississippi State. Mr. Deveaux helped start the Austin band 'Something in Mind' and performs with the 'Trent Durham Group.' Chad thanks God for allowing him to share his gift of song, his vocal coach and his parents for their continuing support.

**"Where
prejudice exists
it always discolours
our thoughts."**

— Mark Twain

Jeremy Ellis (Andy, Ensemble)

Zilker Theatre welcomes Jeremy to *Big River* in his Austin debut. Mr. Ellis is not new to theatre, however. His past roles include Paul in *Moon Over Buffalo*, Salieri in *Amadeus*, Henry Higgins in *My Fair Lady*, Man in *Laughing Wild* and Lloyd Dallas in *Noises Off*. He is a native of Lubbock, Texas, and proud to currently call Austin home.

Jeff Ferry (Lafe, Ensemble)

Jeff is making his second Zilker Summer Musical appearance. Mr. Ferry was last seen as Stewpot in *South Pacific*. Jeff is a member of the inaugural graduating class from John B. Connally High School in Pflugerville. His three (3) years of theatre experience include roles as Pantalone in *Turandot*, Quasimodo in *Hunchback of Notre Dame*, Cyrano in *Cyrano De Bergerac*; all at Connally High School. During his high school years, Jeff was involved with both drama and varsity choir.

Gaye H. Fisher (Alice, Ensemble)

Gaye is a music teacher in the Pflugerville School District. She holds a Bachelor and a Master's degree in Music Education and Performance. She had the opportunity to perform as a back-up singer with musicians like Charlie Daniels, Larry Gatlin, Al Green and Shirley Caesar. As a music teacher, she has produced and directed productions of *Bye, Bye Birdie*, *My Fair Lady*, *Applause* and *Annie Get Your Gun*. This is Gaye's first summer musical. She is very active in her church and devotes her time to her husband and children.

Marissa Fisher (Alice's Daughter, Ensemble)

Marissa Fisher is a member of the Austin Children's Choir. She has been in numerous church and school choirs since she was 5 years old. She played the Cleaning Woman's Daughter in last year's Xperience Youth at Zilker Youth Production of *Working*. She also played Chelsea in her school play this year called *Reach for the Stars*. Marissa has studied ballet and tap and is beginning piano lessons this summer. Miss Fisher will be a 5th grader at Gullett Elementary School this year.

Jean M. Grace (Ensemble)

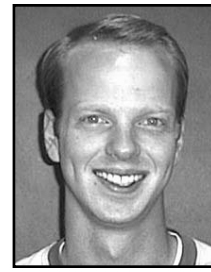
This musical theater and operatic stage veteran is delighted to add *Big River*, her first Zilker production, to her list of performance credits. Ms. Grace has performed in many shows including *Pippin*, *Into the Woods*, *A Christmas Carol*, *Anything Goes*, *You're A Good Man Charlie Brown* and *L'il Abner*. A native of Boston, Jean has sung with the renowned Tanglewood Festival Chorus, the Boston Bel Canto opera company, the Arcadia Players and the Richard Crittenden Opera Workshop. Jean moved to Austin in 1995 to attend the University of Texas, where she earned a Master's Degree in Voice. She enjoys solo work, a regular performance position (at First United Methodist Church) and teaching private voice.

John Hashop (Young Fool, Ensemble)

John Hashop recently graduated from Southwestern University with a B.F.A. in Theatre. Favorite roles at Southwestern include Zangler in *Crazy for You*, The Padre in *Man of La Mancha* and Father Jack in *Dancing at Lughnasa*. He has also performed two seasons with Southwestern Summer Stage. Mr. Hashop is debuting on the Zilker stage with *Big River* and is extremely happy to finally not be playing a priest or an older gentleman.

Huck Huckaby (The Duke)

Honestly, that's his name! This is the third Zilker Musical for Huck, having previously appeared in *Oklahoma!* and *Little Me*. Locally, he has worked with The State Theater Company (Formerly Live Oak Theater), Capital City Playhouse and Second Youth Repertory Family Theatre. Other appearances include *The Best Little Whorehouse in Texas*, *A Little Night Music*, *She Loves Me*, *Evita* and *Steadfast Tin Soldier*. When not on stage, Huck is the resident stage manager for Tapestry Dance Company.



Jeremy Ellis



Jeff Ferry



Gaye H. Fisher



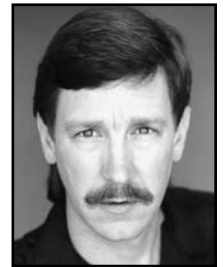
Marissa Fisher



Jean M. Grace



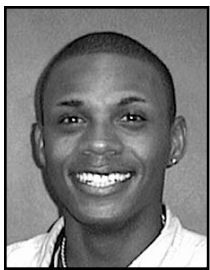
John Hashop



Huck Huckaby

**“Let us endeavor
so to live that when
we come to die even
the undertaker will
be sorry.”**

— Mark Twain



Fritz W. Johnson III



Melissa K. Joiner



Nathan Joiner



A. J. Lewis



Ronnie Macklin



Grant C. McCollor



Kelly McDaniel

Fritz W. Johnson III (Ensemble)

Fritz is making his Zilker Summer Musical debut with *Big River*. Mr. Johnson has performed in numerous dance and talent shows. Since age nine, he has performed with church and community choirs. He toured with a Rock-n-Roll-Pop Band in California and Kansas. Fritz is grateful for his involvement in *Big River*, *The Adventures of Huckleberry Finn* and the opportunity to perform with such a talented cast.

Melissa K. Joiner (Ensemble)

Big River marks Melissa's her first appearance with Zilker Theatre Productions. She has previously performed in *Gypsy* and *Annie* with Austin Musical Theatre and *A Christmas Carol* at both Live Oak and Zachary Scott Theatres. Her TV appearances include Texas Graces, The People Next Door, A Mother's Gift and Real Stories of the Highway Patrol. Melissa enjoys singing and dancing at local events such as Aquafest and Pecan Street Festival. She is attending sixth grade at Lake Travis Middle School and loves piano, voice, dance and acting lessons.

Nathan Joiner (Ensemble)

Nathan is making his second appearance with Zilker Theatre Productions, having last performed in *Joseph and the Amazing Technicolor Dreamcoat*. Other performance credits include *Fiddler on the Roof*, *A Christmas Carol*, *The Sound of Music* and *Peter Pan*. His film and TV credits include Café Boh, Blank Check, The People Next Door and Real Stories of the Highway Patrol. He is a 16-year old honor student at Lake Travis High School, where he was a letterman on the varsity soccer team and enjoys playing violin in the school orchestra.

A. J. Lewis (Ensemble)

Mr. Lewis is making his Zilker Summer Musical debut with *Big River*. A.J. is a recent graduate from Southwest Texas State University in San Marcos. While new to the Zilker stage, he is no stranger to performing. A.J. has performed across Central Texas in productions of *Sweeney Todd*, *West Side Story*, *Fiddler on the Roof*, *Working*, *Jeffrey*, *Of Mice and Men*, *The Boys Next Door*, and *Blues for Mr. Charlie*.

Ronnie Macklin (Sheriff Bell, Ensemble)

Ronnie is a theatre major from Southwest Texas State University, making his third appearance on the Zilker Stage, following *Guys & Dolls* and *South Pacific*. Mr. Macklin has been active in theatre for ten years with credits including: Quincy in *Dracula*, A Musical Nightmare, Argon in *The Imaginary Invalid*, Jimmy Perry in *The Gingerbread Lady* and Lazar Wolfe in *Fiddler on the Roof*.

Grant C. McCollor (Ben Rogers, Ensemble)

Grant is new to Austin and making his debut appearance with Zilker Theatre Productions. Grant attended Webster University's Musical Theatre Conservatory where roles included Narrator in *Joseph and the Amazing Technicolor Dreamcoat*, Charles in *Dracula*, Mr. Sowerberry in *Oliver*, *Murder on the Nile* and *Oklahoma!* He has toured the country in numerous choirs, with both madrigal and variety shows. Mr. McCollor will attend the University of Texas at Austin this fall to complete his BA degree in Theatre and Dance.

Kelly McDaniel (Judge Thatcher, Ensemble)

Kelly is a veteran Austin performer in his first appearance with Zilker Theatre Productions. He performed here in Austin Shakespeare Festival's *The Winter's Tale*, and *Much Ado About Nothing*. Recent roles include Judge Omar Gaffney in *Harvey*, and Otto Van Daan in the Austin Theatre for Youth production of *The Diary of Anne Frank*. Kelly's credits include several movies, commercial productions for Dell Computers, and print ads in the New York Times, and Time Magazine. He created the character voices for the CD game "Agents of Justice", and recently recorded a companion CD for high school biology course textbooks. Watch for Kelly next in State Theater production of *The Taming of the Shrew*.

"In our country, we have those three unspeakably precious things: freedom of speech, freedom of conscience, and the prudence never to practice either of them." – Mark Twain

Brett McHargue (Counselor Robinson, Ensemble)

Brett is currently a senior programmer/analyst with Computer Science Corporation and was recently seen on stage in The State Theater Company's *My Fair Lady*. He is making his second summer musical appearance with his previous experience as a brother in *Joseph and the Amazing Technicolor Dreamcoat*. Mr. McHargue sings with the Capital City Men's Chorus and serves on its Board of Directors as President and Treasurer.

Ann Richards-McKelvey (Strange Woman, Ensemble)

Ann is making her fourth summer musical appearance including *Once Upon a Mattress*, *Guys & Dolls* and *South Pacific*. She was recently seen in *My Fair Lady*. Other credits include *Man of La Mancha*, *Sweeney Todd*, *A Christmas Carol*, *Dracula*, *A Musical Nightmare*, *Seven Brides for Seven Brothers*, the 1998 *Gilbert & Sullivan Gala* and *Some Enchanted Evening*. Ann has been a finalist for several vocal contests including the Riata Talent Search and has performed for the Austin Ice Bats. She currently works as a special education teacher.

John David Minnich (Ensemble)

Big River, *The Adventures of Huckleberry Finn* is John's first Zilker Summer Musical. At 11 years old, he just finished fifth grade at Brentwood Elementary School. John enjoys performing with the All-City Honor Choir. Theatre is not John's only interest; his other hobbies include soccer and baseball, which he has been playing since the age of five.

Robert Muraida (Doctor, Ensemble)

Robert is pleased to be participating in his fourth Zilker Summer Musical, having been in *Once Upon a Mattress*, *Guys & Dolls* and *South Pacific*. He has appeared in several musicals in and around Austin, including productions of *Evita*, *Jesus Christ Superstar*, *The Rocky Horror Show*, *Assassins* and *Camelot*. Robert was a member of River City Pops and is currently rehearsing the part of Pilate in the Meltin Moon Theatre production of *Jesus Christ Superstar*, which opens in Spring 2000.

Katie Onken (Widow Douglas)

Big River is Katie's musical theatre debut in Austin. She has worked with Frontera, project interact with Zachary Scott Theatre, the Fabulous and Ridiculous Theatre, The Colonial Shakespeare Company, and is a founding member of 4th Wall Theatre. Katie moved to Texas from Chicago where she received a BSS from Northwestern University and worked in Chicago theatre for five years. She enjoys riding fast on her road bike, wrestling with her blue heeler "Loot", and playing various musical instruments while singing loudly.

Bill Passalacqua (On Stage Musician, Silas, Ensemble)

Bill is an Illinois native who has lived in Austin for five years. He is making his debut performance with Zilker Theatre Productions with *Big River*, *The Adventures of Huckleberry Finn*. Bill is a professional singer, songwriter and traveling troubadour. Mr. Passalacqua is excited to have his first CD coming out this summer.

Mark Passarella (Hank, Ensemble)

Mark is a native Austinite and a Zilker Summer Musical veteran having performed in *Camelot*, *Carnival*, *Annie*, *Once Upon a Mattress*, *Guys & Dolls* and last summer's *South Pacific*. His other credits include Zachary Scott Theatre's *The King and I*, *Carousel*, two productions of *A Christmas Carol* and Second Youth's *Snow Queen*. Mark has also performed in UT's Summer Pizzazz productions of *What I Did Last Summer*, *Green Grow the Lilacs*, *All the Way Home* and *Nice People Dancing to Good Country Music*. He was also seen in University Presbyterian Church's production of *Celebration*. Mr. Passarella is a former member of River City Pops.

Angie Ray (Ensemble)

Angie is a graduate of KD Studio Actors Conservatory in Dallas. She has performed in various theatre's in the Dallas/Fort Worth area. Most recently playing Joanne in the Granbury Opera House's production of *Godspell*. Her credits also include singing country music and performing in Branson, Missouri. *Big River* is her first musical production since moving to Austin where she is a backup singer for local favorite 'Trent Durham' at Speak Easy.



Brett McHargue



Ann Richards-McKelvey



John David Minnich



Robert Muraida



Katie Onken



Bill Passalacqua



Mark Passarella



Angie Ray

**"Always do right.
That will gratify
some of the people,
and astonish
the rest."**

— Mark Twain



John Steven Rodriguez



Nicholas Rodriguez



Mark Rosholt



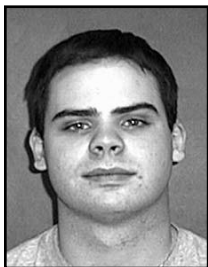
Scott Schroeder



Haley Smith



Jeanette Steiniger



Doug Thompson

John Steven Rodriguez (Schoolmaster, Ensemble)

This is John's third appearance with Zilker Theatre Productions. Previous Zilker Hillside appearances have been *Guys & Dolls* and *South Pacific*. This Vortex Repertory Company member has appeared most recently in the second installment of ethos X and Y Trilogy of cybernetic operas, *Panoptikon* and has been assistant director to productions such as Aaron Brown's *Norm L.* and Kirk Smith's adaptation of Charles Dickens *Tale of Two Cities*. John currently studies voice with Norma L Faison Mayer.

Nicholas Rodriguez (Tom Sawyer)

Although this is Nick's first production on the Zilker Hillside, he is no stranger to the stage. Nicholas performed in *Putting It Together*, *Susannah*, *The Steadfast Tin Soldier*, and a concert version of Sondheim's *Passion*. He has also been seen in *She Loves Me*, *Grease* and *Little Shop of Horrors*. This Masters student in Voice at the University of Texas, has appeared in UT Opera Theatre's productions of *The Fantasticks*, *The Mikado*, *The Coronation of Poppea* and *The Roar of the Greasepaint, the Smell of the Crowd*. His recordings include the World Premiere of Linda Twine's gospel cantata *Changed My Name*, and various recordings for Disney.

Mark Rosholt (Pap Finn)

Mark is appearing in his third Zilker Summer Musical, having performed in *South Pacific* and *Guys & Dolls* during the last two summers. His other performance credits include Austin Musical Theatre's productions of *Fiddler on the Roof* and *West Side Story*, Rare Creations production of *Assassins*, as well as *Joseph and the Amazing Technicolor Dreamcoat*, *Gypsy* and *Pirates of Penzance* which are among his favorites. Mark lives in Austin with his rehearsal tolerant wife Kathy Bolstorff.

Scott Schroeder (The King)

Big River marks Scott's sixteenth year working with Zilker Theatre Productions. His last Hillside performance was as King Sextimus in *Once Upon a Mattress*. Other Zilker shows include *Little Me*, *Into the Woods*, *Camelot*, *The Unsinkable Molly Brown* and *Good News!* Scott recently received the Austin Critics Award for Featured Actor in a Musical for last year's *The Who's Tommy* (Uncle Ernie) and *Schoolhouse Rock - Live!* (Conjunction Junction/I'm Just a Bill) at Zachary Scott Theater. Some of his favorite roles include *Cabaret* (Emcee) for which he won both the Austin Critics and B. Iden Payne Awards as well as *Man of La Mancha* (Sancho/Padre), *Passion* (Colonel Ricci), *The Miser* (Master Jacques) and *Peter Pan* (Smee). As Artistic Director of Broadway Austin, Scott has produced successful runs of *Nunsense*, *Little Shop of Horrors* and *Gifts of the Magi* which he also directed.

Haley Smith (Ensemble)

Haley is returning for her second year with the Zilker Summer Musical after appearing in *South Pacific* last year. She is a senior at Bowie High School where she is involved in many activities such as choir, National Honor Society, the Bowie drill team - Silver Stars and Starlight Theater where she appeared in the musical *Guys & Dolls* this past year.

Jeanette Steiniger (Joanna Wilkes)

Big River marks Jeanette's debut performance on the Zilker stage. Previous musical performances include *Here's Love*, *The Wiz*, *Broadway Celebration*, Cinderella in *Cinderella* and Hope Harcourt in *Anything Goes*. Jeanette currently teaches dance with Dance Associates and music at Children's Network. She graduated from Pflugerville High School in 1997 where she played flute in the band, sang with the choir and was captain of the dance team. Miss Steiniger spent one year at The American Musical and Dramatic Academy in New York City.

Doug Thompson (Simon, Ensemble)

Mr. Thompson performed in such productions as *The Best Little Whorehouse in Texas*, *Dangerous Liaisons* and *Romeo and Juliet* on the Southwest Texas State University stage. Doug is a 1999 graduate, receiving his BFA in Theatre Arts with a concentration in acting. This is Doug's first production with Zilker Theatre Productions. Doug is excited about appearing with "a great group of people" in *Big River*, *The Adventures of Huckleberry Finn*, one of his favorite shows.

**"All you need
is ignorance and
confidence; then
success is sure."**

— Mark Twain

Clay Towery (Harvey Wilkes, On Stage Musician)

Big River marks Clay's third summer musical. He played Ike Skidmore in *Oklahoma!* and various roles in *Little Me*. Clay last appeared on the hillside with Austin Shakespeare Festival as Polixanes in *The Winters Tale*. He earned a degree in theater from St. Edwards University and is working on a Master of Fine Arts, at the University of Idaho. Favorite roles include: Iago in *Othello*, J.J. Peachum in *A Three Penny Opera*, Sir Toby Belch in *Twelfth Night* and Owen Musser in *The Foreigner*. Clay works as Special Events Coordinator for Austin Parks and Recreation Department.

Kyle Walker (Dick, Ensemble)

As a senior at Hays High School, Kyle participates in both speech and band. He plays several instruments: the trumpet during marching season and the euphonium during concert season. **Big River**, *The Adventures of Huckleberry Finn* marks Kyle's debut with Zilker Theatre Productions. Mr. Walker's favorite (previous) role is Will Parker in *Oklahoma!*

Lindsay Kaye Wells (Susan Wilkes, Ensemble)

Lindsay is making her Zilker Summer Musical debut with **Big River** but is no stranger to performing. Frequently, she sings the National Anthem at the opening of Austin Ice Bats and Texas Terminators games. She has made guest appearances as Featured Austin Talent on K-Eye 42 and entertained for Miss Austin USA and Miss Austin Teen USA pageants. Ms. Wells performed in *A Christmas Carol* at Zachary Scott Theatre, *Waiting for Godot* at Austin Theatre for Youth and *The Steadfast Tin Soldier* at Second Youth Repertory Family Theatre.

Virdell Williams, Jr. (Jim)

Mr. Williams is a native of Lubbock, Texas and has performed with a number of musical theatre, concert and opera groups in California and abroad. Some of his roles include: Yamado in Puccini's *Madama Butterfly*, Wagner in Gounod's *Faust*, Silvio in Leoncavallo's *Pagliacci*, Umberto in Pergolesi's *La serva padrona*, Aeneas in Purcell's *Dido and Aeneas*, the title role in Verdi's *Rigoletto* and Scarpia in *Tosca* with Bayerische Opera in Munich, Germany. He has performed Jim in **Big River** with Peninsula Center Stage and would enjoy establishing an international performing career.

Larissa Wolcott (Mary Jane Wilkes)

This is Larissa's second year on the Zilker Stage after last year's production of *South Pacific*. She currently teaches children's acting at the Acting Studio and plans to return to school to complete her degree in Musical Theatre. Past credits include: Cheryl in *The Taffetas* at Zachary Scott Theatre, Lucy in *Dracula: A Musical Nightmare* with Violet Crown Players, Agnes in *Gypsy* for Austin Musical Theatre, Winky/Jack in *Trouble in Santa's Workshop*, Three in *The Dragon King* and *My Fair Lady*.

Jason Yau (Jo Harper, Ensemble)

Jason is making his Zilker Summer Musical debut with **Big River**, *The Adventures of Huckleberry Finn*. He is a sophomore voice major with a minor in business at the University of Texas at Austin. Mr. Yau has a wide range of favorite roles including Nathan Detroit in *Guys & Dolls* and Chip in *Beauty and the Beast*. His most recent show was *Bandanna*, a production by UT's Graduate Opera Theater.



Clay Towery



Kyle Walker



Lindsay Kaye Wells



Virdell Williams, Jr.



Larissa Wolcott



Jason Yau

"The man who does not read good books has no advantage over the man who can't read them."

— Mark Twain



Diversity. That's The Beautiful Thing About Book People. ?

Whether you prefer men, women, both, or neither, your orientation should be toward Book People. At the largest book store in Texas, everyone's passions are well represented. From

Book People

hetero to who-the-heck-knows. Get into Book People and ask for Stan and Abe, the Book Guys. They're a helpful team. No matter what team you're on. SIXTH & LAMAR, 472-5050. OPEN 9-11 DAILY.

STAFF LIST

Executive Producer..... William Sheffield
 Director..... Rod Caspers
 Co-Choreographers..... Acia Gray and Dierdre Strand
 Music Director/Conductor Lyn Koenning
 Scenic Designer J. Richard Smith
 Costume Designer Sheila Hargett
 Costume Design Assistant Carol Horn
 Lighting Designer Robert T. Whyburn
 Sound Designer Bill Mester
 Property Designer..... Valerie Sadorra
 Wigs/Hair Design Theresa Mancuso
 Production Stage Manager Susan Threadgill
 Stage Manager Michael McKelvey
 Asst. Stage Manager Aubrey Lindquist*, T. Michael Word*
 Zilker Park Stage Manager..... Bill Wise
 PARD Special Events Manager..... Clay Towery
 Technical Director Dwight Markus
 Master Carpenter Michael Gessaman
 Master Electrician David "Seb" Boone, Richard Brown
 Costume Shop Manager(s) Sheila Hargett, Elspeth Mason
 Wigs/Hair Assistant..... Margaret Downs*
 Sound Mixer Bill Mester
 Sound Technician Jason Surrence
 Deck Sound Technician Alex Herrin
 Scenic Artist(s) J. Richard Smith, Kristen Hurst, Brendon Walsh
 Puppet Creator..... Brian Gaston
 Scenery Construction Foreman..... Michael Gessaman
 Scenic Carpenters Michael Gessaman, Richard Nance, Brad Wilson
 Metal Work..... Vince Herod
 Cutters/Stitchers/Tailors Stephen Buttler*, Ishaq Clayton*,
 Lisa R. Fisher*, Carol Goodspeed*, Matthew Holloway, Etta Holt*, Jeffrey Jacoby*, Pam Johnson*, Kathy Lang, Deanna Lindstrom*, Theresa Mancuso, Elspeth Mason, Thomas Mayfield*, Emily McElroy, Rebecca Meischen*, Cameron Pearce*, Melanie Puckett*,
 Sarah Rochford*, Sterling Titus*, Jamie Trosper*, Shawn Tuthill*,
 Amanda Walker, Houston Walts*, Paige Wright*, Nathan Wylie*
 Head Cutter Draper Homa Khosh Khui
 Wardrobe Supervisor..... Matthew Holloway
 Electrician(s) Brandon Howe, Jason Amato, Zach Murphy
 Deck Electrician David "Seb" Boone
 Light Board Operator..... Bob Fishbeck*, Kevin Kennedy*
 Follow Spot Operator Sarah Bremen*, Eleanor Fowler*,
 Carol Horn*, Chip Howe*
 Running Crew Chief Kevin Faure*
 Dressers and Running Crew Peter Beilharz*, Rhett Braniff*,
 Margaret Downs*, Darryl Gurecky*, Catherine Hoey*, Pam Johnson*,
 Carol Keate*, Suzanne King*, Aubrey Lindquist*, Karen Nabers*,
 Alicia Silva*, Aimee Spence*, Dana Stover*, Kay Willoughby*,
 Trinka Withers, T. Michael Word*, Sandy Zelmanski*
 Production Printing..... Horizon Graphics
 Production Art Design and Program Layout Scott Schroeder
 Program Photography Steve Wilson
 Zilker Theatre Productions ISP Mike Dempsey, OuterScape

Scenery was executed in the Austin Lyric Opera Scene Shop.

(* Designates Volunteer)

STAFF BIOGRAPHIES

Rod Caspers (Director)

Rod graduated from Illinois State University and earned an MFA from The University of Texas at Austin. He has taught and directed at the University of Northern Iowa, the University of Wisconsin and the University of Texas. He is Program Coordinator for UT's Office of University Relations, creating and producing official university events. Rod conducts directing workshops throughout the nation and serves as a guest artist/instructor for the Facing History and Ourselves Program in Zurich Switzerland and Boston. While in New York, Rod served as Associate Director for GreenPlays, creating and directing several new musicals and cabarets. He has directed over 70 productions including *Das Barbecue*, *Working*, *Merrily We Roll Along*, *Lies and Legends*, *Pippin*, *Close Ties*, *Shirley Valentine*, *Once on This Island*, *In the Heart of America*, *Tintypes* and *'night Mother*. Recently he directed *The Good Times Are Killing Me*, *The Diary of Anne Frank* and *Ordinary People* for Austin Theatre for Youth. Rod is Artistic Director of Grinnell Productions. This winter he will again manage the Rockettes' Radio City Christmas Spectacular with his colleague Chan Chandler.

Douglas W. Bolin (Assistant Director)

Doug has performed in musical theater and operatic productions for the past 15 years. His leading roles include Sam in *Street Scene*, Don Ottavio in *Don Giovanni*, and Rinuccio in *Gianni Schicchi*. He was associate producer for the Ohio State University's productions of *South Pacific*, *The Turn of the Screw*, *Street Scene*, *Don Giovanni*, *Side by Side* and others. He has been a part of the production team for the Austin Lyric Opera and the Glimmerglass Opera and done consultant work for Opera Columbus. He has been a member of the voice faculty at Baylor University for the past two years and currently is a member of the production staff for the Office of University Relations at The University of Texas at Austin.

Lyn Koenning (Music Director)

Lyn returns as Music Director from last

years production of **South Pacific**. She has over 20 years teaching, conducting and performing experience and has been nominated by the Austin Critics' Table as Best Musical Director for **Five Guys Named Moe** (1994), **The Beggar's Opera** (1995) and **A Day in Hollywood/A Night in the Ukraine** (1999). She has served as musical director or piano/conductor for five shows named Best Musical in Austin including **Beehive**, **Rockin' Christmas Party**, and **Dreamgirls**. She will next be musical director for the upcoming production of **Camelot** this fall at the Mary Moody Northen Theatre. Lyn holds a Master of Music degree from UT Austin and teaches private piano to children of all ages. Visit her on the web at music-worksstudios.com!

Acia Gray (Co-Choreographer)

Ms. Gray has shared the stage with such tap greats as Gregory Hines, Savion Glover, Brenda Bufalino, Sarah Petronio and many others in productions such as **The Great Tap Reunion**, **Tap Do/Wop**, **Just Friends** and **Chicago on Tap**. Acia is producing artistic director of Tapestry Dance Company after nine years dancing as a founding member of Austin On Tap. She has served on the steering committee of the International Tap Association. Additionally, Acia works with numerous dance organizations including Dance Masters and the Texas Association Teachers of Dance. She has worked with Live Oak Theatre on productions of **Nunsense**, **She Loves Me**, **Cabaret** and **Man of La Mancha** as well as collaborations with Ballet Austin. Ms. Gray teaches an accredited tap program at Austin Community College and Tapestry Dance Company Academy. She is also Artistic Director/Tap for Dance Arts Institute of America and has choreographed and taught for numerous organizations across America and abroad as well as published the critically acclaimed book, "The Souls of Your Feet".

Deirdre Strand (Co-Choreographer)

Ms. Strand started her professional career with the Fort Worth Ballet and continued with James Clouser's Space/Dance/Theatre and Austin on Tap touring company. She received her B.F.A. in Dance from the University of Houston in addition to studying with Manolo Agullo, Fernando Schaffenberg, Edward Villella, Arthur Mitchell and Melissa Hayden. Highlights of her ballet roles include James Clouser's **Rasputin** and

Don Quixote staged by Miguel Terekov. Her unique and holistic teaching techniques are in demand locally, nationally and abroad, ranging from Ballet Austin to **The International Summer School**, Cyprus and the Dance Department of TASSIS/London. Deirdre is Academy Director and co-Artistic Director of Tapestry Dance Company, heads the Dance Department of St. Stephen's Episcopal School, Austin and Artistic Director of Jazz for Dance Arts Institute of America.

J. Richard Smith (Scenic Design)

J. Richard Smith returns to the Zilker Summer Musical having designed **Guys & Dolls** two years ago. A designer by profession, his works have been seen regionally and locally at almost all the major theatre companies in Austin. Some of his representative designs include: **Carousel**, **The Boys Next Door**, **A Shayna Maidel**, **Damn Yankees**, **Once On This Island**, **Man of La Mancha**, **The Prima Donna's Mother is a Drag**, **The Paramount 75th Gala**, **A Winter's Tale**, **The Steadfast Tin Soldier** and many others. Richard is also proud to helm one of Texas' finest family theatre companies, serving as Producing Artistic Director for Second Youth Repertory Family Theatre.

Sheila Hargett (Costume Design)

Sheila is currently Professor and Head of Costume Design and Technology in the Theatre Department at Southwest Texas State University where she has taught and designed for over twenty-eight years. Ms. Hargett began her career as an actress and still performs from time to time. She holds a M.A. from LSU and a M.F.A. from SMU where she studied with Broadway designers Bill and Jean Eckart. She has designed for The Shakespeare Festival of Dallas, SMU Theatre, Eastfield College, Texas Playwright's Company Theatre, Live Oak Theatre, Austin Shakespeare Festival, Texas Education Foundation, Texas Wax Museum and Aquarena Springs Theme Park. Ms. Hargett has designed and/or supervised student designs for over 200 productions. Those among her own designs include **The Tempest**, **A Christmas Carol**, **A Long Day's Journey Into Night**, **West Side Story**, **Hair**, **Romeo & Juliet**, **The Glass Menagerie**, **Twelfth Night**, **The Government Inspector**, **The Miracle Worker**, **The Runner Stumbles**, **A Man For All Seasons** and **A Doll's House** to mention a few.

Robert T. Whyburn (Lighting Design)

Mr. Whyburn has been working as a lighting designer over 10 years. **Big River** marks Robert's 10th summer musical since **Annie** in 1990. He regularly designs for Austin Shakespeare Festival and Zach Scott. Recent theatre credits include Creative Opportunity orchestra at Laguna Gloria and Beehive at Zachary Scott. His future projects include Austin Shakespeare Festival's **Othello**, **As You Like It** and his annual contribution of Christmas lights on 37th street. Robert is a graduate of the University of Texas with a Bachelor of Arts degree in Theatre. Throughout his career, Robert has received numerous theatrical awards including the B. Iden Payne Award and Critics Table Award. Mr. Whyburn is Technical Director at St. Stephen's school.

Bill Mester (Sound Design)

This is Bill's third season with Zilker Theatre Productions after working on **Guys & Dolls** and **South Pacific**. He studied audio and recording technology in 1989 at Houston Community College with a scholarship for academic achievement. Mr. Mester worked several years in the corporate audio-visual field for such clients as PBS and IBM. He currently works with touring productions at the University of Texas Performing Arts Center and is sound designer for Austin Lyric Opera and sound engineer for Ballet Austin.

Theresa Mancuso

(Wig/Make-Up Design)

Theresa Mancuso is pursuing her Master of Arts degree in Costume Design at Southwest Texas State University. She has lived in the Austin area for many years designing costumes and makeup for Vortex Theatre, Different Stages and Kids Acting. Ms. Mancuso has been nominated for two B. Iden Payne Awards for her work. She has been guest artist at McNeese State University where she designed costumes and makeup for **Into the Woods**. Theresa won an award from the American College Theatre Festival for Outstanding Life Size Puppet Design, and a cash award from the Texas Educational Theatre Association's DESIGNFEST for **The Wizard of Oz**. She has designed and built costumes for Mardi Gras in Louisiana since 1984. This is her debut with Zilker Summer Musicals as designer for hair and makeup.

Susan Threadgill

(Production Stage Manager)

Susan has worked in Austin arts and theatre for the past 17 years. Former production stage manager for The University of Texas Performing Arts Center and current production manager for Austin Lyric Opera, she has been on staff for the Zilker Summer Musical since **West Side Story** in 1992. Ms. Threadgill serves on the Board of Trustees for the Austin Shakespeare Festival and will produce **Othello** and **As You Like It** at the Beverly S. Sheffield Zilker Hillside Theater following **Big River**.

Michael McKelvey (Stage Manager)

Michael is a doctoral student at the University of Texas in vocal performance. He recently produced **Patience** for Austin's Gilbert & Sullivan Society, directed **Dracula: A Musical Nightmare** for Violet Crown, appeared in **My Fair Lady** (State Theater) and **Passion** (ACoT), music directed **You're a Goodman**, **Charlie Brown** (JCC), and assistant stage managed **Tosca**, **Salome**, and **Otello** for Austin Lyric Opera. He teaches voice and drama for St. Stephen's School, Zachary Scott Theatre, Austin Musical Theatre and Tapestry Dance. This marks the third time he has worked with Rod Caspers (**Branson or Bust** and **Das Barbecu**) and his fourth time stage managing for Zilker Theatre Productions (**Once Upon A Mattress**, **Guys & Dolls**, **South Pacific**).

William Sheffield (Executive Producer)

Mr. Sheffield is repeating his work with Zilker Theatre Productions as Executive Producer. He was co-producer of the Austin Shakespeare Festival, also known as "Shakespeare in the Park" for the past three years. This year Bill is directing **Othello** for Austin Shakespeare Festival which opens in September. Bill has served as production manager for the Paramount Theatre and worked with many groups as stage/production manager or lighting designer; groups including Austin Musical Theatre, Zach, Austin Lyric Opera, Ballet Austin, Austin Symphony Orchestra, Austin Contemporary Ballet, Austin Dance Ensemble, Texas Youth Ballet and Slavin-Nadal Dance. Mr. Sheffield received his BFA in acting at UT after appearing in over 12 productions. Bill currently owns a multi-media company catering to Las Vegas casinos and other entertainment-related companies.

SPECIAL THANKS

Without the support of these individuals and groups and all of our many volunteers, we would not be able to bring you the "magic" of tonight's summer musical.

Access Austin Arts - Betty Siegel
Akin, Gump, Strauss, Hauer & Feld - Melissa Eason-Brackin, Karen Hausman-Haywood, David Nelson
Albertson's #4022, #4029, #4031, #4244
Artistic Team - Rod, Sheila, Lyn, Acia, Dierdre, Robert, Rick, Valerie and Bill for such an exciting team
Audition volunteers - Kathleen Deaver, Jeff Ferry, Mary Pat Helton, Dan Smith, Arlene Storm, Kay Willoughby, Sandy Zelmanski
Austaco - Bethany Brevard
Austin American Statesman - Michael Barnes, Arnold Garcia, Jane Greig, Charlotte Moore
Austin Arts Commission - Peer Panelists - Sandra Bonsell, G'Ann Boyd, Karen Collier, Lynn Fisher, Steven Lora, Judith A. Rhedin; Commissioners - Maxine Barkan, Andrea Bryant, Deanna Hendrix, Chelby King, Pat Orman, Bernadette Phifer, Leslie Pool, Deanna D. Rodriguez, Bruce Willenzik
Austin Chamber of Commerce - Mary Buck
Austin Circle of Theaters - Ann Ciccolella
Austin City Council and City Manager - Mayor Kirk Watson, Staff Member Jill George, Council Member Gus Garcia, Staff Member Paul M. Saldana, Council Member Daryl Slusher, Council Member Willie Lewis, Staff Member Dwight Burns, Council Member Beverly Griffith, Staff Member Suzie Harriman, Council Member Bill Spelman, Mayor Pro Tem Jackie Goodman, City Manager Jesus Garza, Allison Taylor
Austin Community Foundation - Georgia B. Lucas Foundation, MariBen Ramsey, Richard Slaughter
Austin Convention and Visitor's Bureau - Betty Baker, Ric Lubert, Wendy L. Morgan, Debbie Oenning, Gwen Spain
Austin Energy - Candice Scott
Austin I.S.D. (Johnston High School) - Rick Garcia, Mark Rosholt
Austin Lyric Opera - Steve Parks, Susan Threadgill, Scene shop staff
Austin Metropolitan Federal Credit Union - Jack Jordan
Austin Parks & Recreation Department - Maria Ciccirelli, Mario Garza, Sarah Macias, Tom Nelson, PARD Director Jesus Olivares,

Police Chief Warren Struss,
Clay Tower, Jimmy Valadez, Bill Wise,
Transportation Division, Park Police
Austin Screen Printing - David Habegger,
Ed Hargett
Bagel Manufactory
Bannockburn Baptist Church
Peter Bielharz
Blue Bell Creameries
Rhett Braniff
Brio Vista - Chuck Smith
Brown Distributing - Agnes Fuccello, Sharon Peterson
Richard Brown
By Yoli - Yoli Rakish, Rich Taylor
Signs of Texas - Yvonne Davin, Kerri Renouf
James Cameron
Capital Comedy Club - Margie, Rich Taylor
David Cross
Elizabeth Christian
Chuy's Hula Hut
Chuy's Comida Deluxe
CitySearch - Robin Loving
Coca-Cola Bottling Company - Charlie Stauffer
Complete Data Solutions, Inc. - Dewey Gaedcke, Andrew Weaver
David Conrad, CPA
Corporate Charities Group - George Cofer
Digatex - Randy Hall
Don Day
Domino's Pizza
Don Martin Public Affairs - Trey Salinas
El Arroyo
Emory, Young & Associates - Jeff Crosby, W. R. "Peck" Young
Fiesta Grocery Mart
Filling Station
Allison Fox
Lettie Freeman
Frisco Shop
From Broadway With Love; entertainers - Wayne Bachus, Anne Chamlee, Betsi Chamlee, Jim Hunter, John Mitschian, Janice Wilson; crew - By Yoli catering, Capitol City Comedy Club, Fabulous Cheesecakes, Stephen A. Laban, Bill Mester, Krag Nordyke, Arlene Storm, Strait Music, Rich Taylor, Ultimate Cheesecakes
Furrow's
Michael Gessaman
Grant Writing Volunteers - Stephanie Mears, Barbara Terry
G.T.E. - Tom Clarke, Melody A. Hilburn
Haynes Marketing - Michael Haynes
Hearing Interpreters - Sharon Barnett, Sue Syphers
H. E. B. Stores - Kate Brown, Laura Rodriguez

Hill Country Springs – Jim Sayers,
Hill Country Springs is the official and
exclusive supplier of water for the 41st
Annual Zilker Summer Musical
Hispanic Magazine - Romeo Perez
Hogg Foundation for Mental Health - Al-
lison Supancic
Home Steam Laundry & Cleaners -
Bob Davis
Horizon Graphics - Blair Dalglish,
Mike Spann
Hula Hut
Jason's Deli – Ronnie Macklin
Junior League of Austin - Julie Allen, Em-
ily Baker, Margaret Downs,
Nancy Edsel, Katie Farrimond,
Eleanor Fowler, Dorothy Garza, Kath-
erine Glass, Pam Griffin, Catherine
Hoey, Carol Horn,
Pam Johnson, Carol Keate, Lee Ann
Kincheloe, Suzanne King, Karen
Nabers, Stacey Nicchio, Hallie Powell,
MariBen Ramsey, Gail Romney,
Suzy Smith, Dana Stover, Mindy Wat-
son, Kathi Whitley, Margy Young
Katz's Deli and Bar
Kerbey Lane Cafe
Kolache Shop
Lakeline Mall – Jenny Faltesek
LCRA - Karen Farabee, Marianne Neely,
Mark Rose, Beverly Seffel, Employees
Charitable Contributions Committee
Liberty Bank – Eddie Safady,
Paige Seidenberger
Lone Star Produce
Luby's Cafeteria
Magnolia Café – Mike Loughan
Diana Markus
Kim and Arturo Mendez
Motorola - Linda Garrett, John Gregson,
Rhonda Tappan
Muir Publishing - Steve Dietz
Norwest – Terry Collins
Oak Farms Dairy
Oasis Restaurant
Office Organization Volunteer -
Michelle Hanus
OuterScape - Mike Dempsey,
Phyllis Pryor-Dempsey
Papa John's Pizza
Marcy Parker
Pencom System - Ed Attaya, Cindy Castillo
Pepsi – Brian Jeffrey
Philip Morris - Jack Dillard
Pizza Hut
Private Idaho (Bagel Manufactory)
Reddy Ice
Rehearse-a-thon volunteers – Shari Garcia,
Kathleen Deaver, Nick Deaver, Mary
Pat Helton, Jan Seward, Arlene Storm,
Lori Storm
Carole Keeton Rylander
Sam's Club
San Francisco Bakery
Schlotzky's - Paige Mitchell
Scott Schroeder

SEMATECH - Matthew Olguinn,
Jean Louis
Serrano's
Bill Sheffield
Shop Skandinavia – Laurie Macinni
South Star Dodge – Rosie Sorenson
Southern Union Gas - Bobbie Barker,
Patty Gonzales, Rick Grundman
Southwest Texas State University Theatre
Department
Special Audience Marketing - Janice God-
win, Ann Little, James Masch
Standard & Poor's, Dallas - Bruce Salzer
Steck-Vaughn Raintree –
Gabriele Madison
Anna Stengel
Lloyd, Arlene, and Lori Storm
Stripling Blake
Sweetish Hill Bakery
Tate/Austin - Kerry Tate
Temple Civic Theatre
Temple Inland - Sue Branch,
Steven Williams
Texas Non-Profit Theatres, Inc. -
Linda M. Lee
Mike Thomas
Tivoli – Cybele Diamandopoulos,
Kristin Karam, Laura Moore
Tracor – Sam Crawford,
Hortense Spangler
Unicare - Pati Fuller
Upper Crust Bakery
UT Performing Arts Center Prop Shop
Vinson & Elkins - Jerry Turner
Vintage Villas - Harold Snyder,
Jack & Nelda Strong
Volunteer Recruiter – Kathleen Deaver
Anne Mary Whyburn & Emily Whyburn
Steve Wilson
Xeno Sound - John Causey
Xperience Youth at Zilker participants
– Marie Ely, Janika Imafcion,
Jenny Ljungquist, Lynn Metcalf,
Mimi Peters, Leah Stoddard, Amelia
Zeringue, Sean Boatman,
Kelly Hollabaugh, Matthew Hum-
prey, Eric Hungerford, Stephen White,
Atticus Wiman, Jacy Cobalis, Ashley
Ledesma, Jennifer Querean, Helena
Stergiou, Angelita Thomas, Matt Gee
Xperience Youth at Zilker technical crew
– Steph Browning, Russell Herman,
Lisa Moreno, Ben Decherd,
Leah Walter, Leah Milroy
Xperience Youth at Zilker staff - Director
– Rick Garcia, Music Director – Jimmy
Edwards, Assistant Director – Kris
Andrews
Blake Yelavich
Zilker Theatre Productions Board
Zilker Theatre Productions Advisory
Board

THANK YOU!

Rehearse-a-thon DONORS

The annual rehearse-a-thon is held during the month of June as a fund-raiser for Zilker Theatre Productions. The cast, crew and volunteers rehearse for 12 hours during the second or third Saturday of the month, and bring in approximately \$5,000 annually. We hope you will become involved as a volunteer or contributor of next year's rehearse-a-thon. We appreciate the contributions from the donors below and hope you will honor them with your business and mention the summer musical.

7-Up – RC – Big Red
Alberton's 4022, 4029, 4031,
4244
Bennigan's
Black-Eyed Pea
Bluebell Creameries
Brick Oven
Brio Vista
Buttercrust Bakery
Canyon Café
Chili's Bar and Grill
Chuy's
City Produce
County Line
Domino's Pizza #9
Eastside Café
Einstein Brothers Bagels
El Arroyo
Fabulous Cheesecakes
Filling Station, The
Fresh America
Frisco Shop
Frito Lay Snacks
Great American Cookies
Hill Country Dairies
Katz's Deli
The Kolache Shop
Lance Snacks
Luby's Cafeteria, North Loop
Luby's Cafeteria, Barton Creek
Oak Farms Dairy
Papa John's Pizzas
Romano's Macaroni Grill
San Francisco Bakery
Sweetie Pies
Sweetish Hill Bakery
Trudy's
U.R. Cooks
Upper Crust Bakery

D O N O R S

Executive Producer

City of Austin under the auspices of the Arts Commission
Junior League of Austin

Associate Producer

Philip Morris, Inc.

Mega Star

Georgia B. Lucas Foundation Fund
Clayton Fund
H.E.B. Stores
Still Water Foundation
Mr. Randall J. Storm

Rising Star

Horizon Graphics
Southern Union Gas
Special Audience Marketing
Arlene & Lloyd Storm

Star

Akin, Gump, Strauss, Hauer and Feld
Ms. Sue Branch
Coca-Cola Corporation
Lower Colorado River Authority (LCRA)
Texas Commission on the Arts

Co-Star

Ray & Mary Margaret Farabee
GF Foundation
Hearts & Minds
Ms. Luci Baines Johnson
Ms. Carole E. Kincaid
Motorola

Lead

Ms. Debbie Alfaro
The Honorable E. Wayne Bachus
Mr. Eric Behrens
Mr. Joseph Bowen
Ms. Melissa Brackin
Chip & Amy Brees
Dr. Rob Bugbee
Ms. Clementine Clarke
Mr. Johnny Clarke
Ms. Cissy Cooper
Mr. Jim Cross
Ms. Phyllis Dempsey
Digatex
Mr. Rex Downing
Mr. Robert Emerson
Ms. Vera Fischer

Ms. Krin Brooks Perry
SEMATECH
Steck-Vaughn Rain-tree
Vintage Villas

Ms. Gaye Fisher
Ms. Lisa R. Fisher
Mr. Jeff Friedman
Mr. Arnold Garcia
Mr. Rick Garcia
Ms. Rita Garza
Mr. Bob Gier
Ms. Janice Godwin
Ms. Karen Haywood
Ms. Catherine Hoey
Mr. Steven Joiner
Ms. Janet Kahn
Ms. Sheryl Kinlaw
Mr. Stephen A. Laban
Ms. Diana Latham
Ms. Blanca Leahy
Ms. Laurie Maccini

Ms. Maline McCalla
Ms. Pati McCandless
Ms. Paula Nadaline
Mr. Ron Oliveira
Ms. Lila Oshatz
Mr. Nick Patras
Mr. Ray Payne
Mr. Romeo Perez
Mr. John C. Perkins
Mr. Gary Powell
Ms. Betty Boyd Pyle
Mr. Rick Richter
Ms. Alice Roberts
Mr. Cary Roberts
Mr. Oscar Rodriguez
Mr. Trey Salinas
Mr. Bruce Salzer
Mr. Eugene Sepulveda
Mr. Beverly Sheffield
Mr. Harold E. Snyder
Ms. Gwen Spain
Mr. Charlie Stauffer
Ms. Kerry Tate
Mr. Rich Taylor
Ms. Dori Thornhill
Mr. Davis Tucker
Mr. Thomas H. Watkins
Ms. Karen Wetterau
Ms. Barbara Williams
Ms. Ann Yeakel
Mr. Blake Yelavich

Supporting Actor

Alexandra W. Albright
Ms. Mary Barnett
Mr. Chris Biehle
Mr. John T. Bradecich
Mr. & Mrs. Everett Bryant
Tony & Martha Burghart
Central Texas Health Clinic
Contempo Travel
Del Webb
William & Alicia Flynn
Howard & Mina Fong
Ron, Lauri, Sara & Jennifer Gilliam
Dr. Thomas Hatfield
Michael Herring
Diana & John Paul Hudson
Ms. Ola Hudson
Mr. Robert Justman
Maids Serving Austin
Dr. Tom S. McHorse
Mr. Michael McKelvey
Susan J. Miller
Caitlin & Lizzie Minnich
Walter & Ferne Mizell
PPD Pharmaco
Eva Pickeral
The Pier on Lake Travis
Randall's
Joseph & Caroline Reynolds
Dr. Bruce Roach
Birdena Schroeder
Ms. Jan Seward
Team Air
United Way
Dr. Wilson

Zilker Theatre Productions Membership

Mr. George Abikha led
Lisa Almgren
Ann Arnold
Susan Bage
Sandra Baker
Di & Phil Baum

June & Gerald Beck
Dr. Robert Bernstein
Mr. Stan Biderman
Ms. Arlene Biehle
Benny & Merry Birkendoll
Paula Blaha
Ms. Sue Blankenburg
Mr. Jim Bleckley
John & Florence Bradecich

Dr. & Mrs. John Brand
Ms. Janet Bray
Mr. Denis Breining
Ms. Alison Louise Brown
Ruth Buss
Mary Len Chambers
Albert & Lorraine Chammah
Grenger & Loretta Chang

Mrs. Clark Charbonnet
Mr. Charles Chaumont
Marianne Chavarria
Mr. Donald Cheatham
Mr. L. H. Cherney
David & Celine Chien
Sara Colombo
Mr. Barry Colvin
Joe & Virginia Conklin
Mike & Melissa Cooper
Diane Copenhaver
Ms. Sue Corman
Mr. Jeff Cownover

Mr. Warner Dahlberg
Mr. Michael Damal
Nancy DeCamp
Daniel & Michelle Dore

Mr. & Mrs. J. C. Dunn
Janet & Rob Dye
Ms. Beatrice Edmonds
Dr. Bill & Judy Estes
Bruce & Tracy Fell
Gregory Figaro

Dr. Carl Fisher
Ms. Linda Fryer
Steve & Lora Ann Gerson
Mr. Jeff Glosser
Ms. Joyce Gonzalez
Patrick & Elizabeth Gove
Ms. Ann Green

Ms. Cynthia Hale
Francine Hanseler
Mr. Steve Harrigan
Ms. Marjorie Heaton
Mary Margaret Holt
Doris E. Hossalla
Ms. Lucy Hough
Jo Sue Howard
Dr. Charles Hudson
Cheryl Johnston
Leslie Johnston
Ms. Shirley Jones
John & Charlene Kennedy

Elizabeth C. Kirk
Carolyn & Ronald Kostecky
The Last Detail
Larry & Kathy Lazicki
Jerome & Dona LeBlanc

Les & Linda Ledger
Mr. & Mrs. M. C. Malone
Philip & Juanita McBride
Barbara McWhirter
Myrtle Melli
John & Melanie Miner
David Minnich & Jan King
Ms. Kimberly Mundt

Mr. Paul Muraida
Ms. Nancy Nickerson
Clarissa Olson
Dr. Henry Onken
Ms. Katie Onken
Raymond & Kathryn Orozco

Richard & Eileen Orton
Ott Partners, LTD.
Ms. Roxane Padgett

Ms. Marcilynn Parker
Nancy & Joe Payne
Mr. & Mrs. Stanley Peterman
Gloria Petersen
David & Vivian Picow

Ms. Rebecca Pratt
Anne Premont
Gary Preuss
Ms. Ann Ratliff

Ms. Tracy Reed
Lynn Remadna
Ms. Carol L. Roam
Kathleen Robertson
Jane & Tony Rose
Ms. Peggy Suehs Ryder
Steve & Pat Rye
Lea & Ellis Sandoz
Ms. Deborah Schaefer
Ms. Ann Sergi
Ms. Jan Seward
Ms. Nancy Woskow Shapiro

Jean Sheffield
Simon & Mary Shih
Jeannine Shirey
Dr. Jonathon Simmons
David & Debbie Smith
Mr. Gerald Smolinsky
Marilyn Smolinsky
St. John's Methodist
Amazing Grays
Maggie Steele & Susan Hovorka

Ann Stephan
Ms. Abby Strauss
Ms. Jodi Telford
Ms. Trudy Tommer-aasen
T. J. Trombley
Ms. Kay Turner
Mr. Neal Underwood
Ms. Barbara Wansley
Virginia Warington
Anita Williams Weaver
Jo Webber
Fred & Lou Wells
Kevin & Donna Wells
John & Tonya Wilkin-son

Ms. Marilyn M. Whitmarsh
Jon Whitney
Ms. Kay Willoughby
Stanley & Fanny Wong
Ms. Victoria Wong
Peter & Juliana Yau
Mr. John F. Yeaman
Ms. Sandy Zelmanski
Mary Hoover Zentmeyer
Mr. Abe Zimmerman

as of 7/1/99



**Southern
Union Gas**

is proud to be a

Rising Star Supporter of Big River

T A P E S T R Y

weaving dance into life

Founders/Directors: Acia Gray & Deirdre Strand

Austin's professional multi-form dance company & academy
Ballet, Jazz, Modern, Rhythm Tap & Irish Step Dance

Full Children's Academy (ages 4 -18)

29 weekly Adult Classes (Beginning through Professional)

Summer Classes now through August 1st. Fall classes start August 10th!

Call 4-Rhythm (474-9846)

507 B Pressler (off 5th St. between Lamar & Mopac)

Manuel's Great Hills
10201 Jollyville Rd
(512) 345-1042



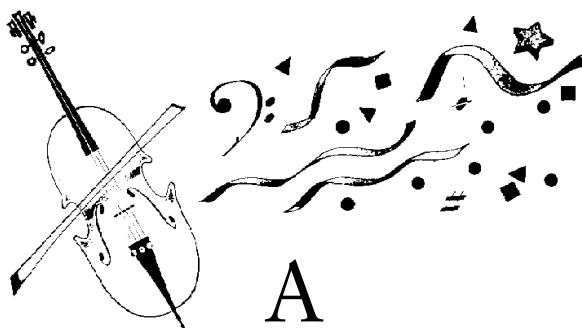
**"AY MANUEL, I LOVE
YOUR COOKING"**

-PALOMA PALOMA

Regional
Mexican Cooking

Manuel's Downtown
310 Congress Ave
(512) 472-7555

Serving Texas Since 1905



A
Commitment
To Excellence

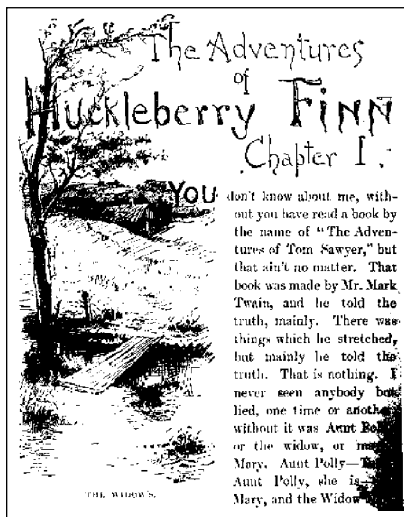
H-E-B

THE STORY OF MARK TWAIN

(Samuel Clemens, 1835-1910)

A onetime printer and Mississippi River boat pilot, Mark Twain became one of America's greatest authors. Tom Sawyer, Huckleberry Finn and Life on the Mississippi rank high on any list of great American books.

Mark Twain was born Samuel Langhorne Clemens on November 30, 1835, in the small town of Florida, Missouri. He was the fourth of five children. His father was a hard worker but a poor provider. The family moved to Hannibal, Mo., on the Mississippi, when young Clemens was 4 years old. It was in this river town that he grew up, and from it he gathered the material for his most famous stories. Hannibal was a frontier town of less than 500 inhabitants. Small as it was, the town offered much valuable material for a budding writer. The inhabitants, a large share of whom Samuel came to know well, ranged on the social scale from poor whites and slaves to the group Huck Finn called "quality folks." It was a market town, visited periodically by farmers from the surrounding countryside. It was also a river town, invaded by all sorts of travelers moving upstream and downstream—steam boat men, revivalists, circus performers, minstrel companies, showboat actors. It was not strange, therefore, that Hannibal and the people encountered there were destined to figure in many of Clemens' books. The character of Judge Thatcher is somewhat like his father; Aunt Polly, his mother; Sid Sawyer, his brother Henry; Huck Finn, a town boy named Tom Blankenship; and Tom Sawyer, a combination of several boys – including himself.



First Page of Original Publication

His father died when he was 12, and the boy was apprenticed to a printer. An apprentice works for someone in order to learn a trade. This was the first step toward his career as a writer. In 1857 he apprenticed himself to a riverboat pilot. He became a licensed pilot and spent two and a half years at his new trade. The Civil War ended his career as a pilot. Clemens went west to Nevada and soon became a reporter on the Virginia City newspaper. Here he began using the pen name Mark Twain. It is an old river term meaning two fathoms, or 12 feet (4 meters) of water depth.

Twain was more than a humorist. Behind his mask of humor lay a serious view of life. The controversial Huckleberry Finn, which is periodically banned in schools or libraries because of alleged racial overtones. It has elements of heartbreak and wisdom that can be appreciated best by adults.

Twain's chief works are: The Celebrated Jumping Frog of Calaveras County (1867), The Innocents Abroad (1869), Roughing It (1872), The Gilded Age (1873), The Adventures of Tom Sawyer (1876), A Tramp Abroad (1880), The Prince and the Pauper (1882), Life on the Mississippi (1883), The Adventures of Huckleberry Finn (1884), A Connecticut Yankee in King Arthur's Court (1889), The Tragedy of Pudd'nhead Wilson (1894), Personal Recollection of Joan of Arc (1896).

Big River, The Adventures of Huckleberry Finn is winner of 7 Tony Awards in 1985 including Best Musical, Best Book of a Musical and Best Musical Score and 7 Drama Desk Awards – including Best Music, Best Lyrics and Best Orchestrations.



Huck and Jim on the raft

Zilker Theatre Productions is proud to continue this cherished legacy of pay-what-you-may family entertainment for over 50,000 musical lovers. Send your tax-deductible donation to: Zilker Theatre Productions, P.O. Box 180222, Austin, TX 78718-0222 or call 512-479-9491 (Visa/MasterCard accepted).