



ONCE
UPON
A
MATTRESS

With our appreciation
for your assistance with the
Zilker Hillside Theatre Summer Musicals,
now and before . . .



Mrs. Dorothy Nan McLean

We dedicate
ONCE UPON A MATTRESS
to you!

The Company

TIME FOR COKE



- TV—Stereo—Radio
- Guitars, Banjos, Horns
- Records and Music
- Pianos and Organs
- Frigidaire Appliances

J.R. REED
Music Company

805 Congress—GR 6-7441

Compliments of your friendly
neighborhood



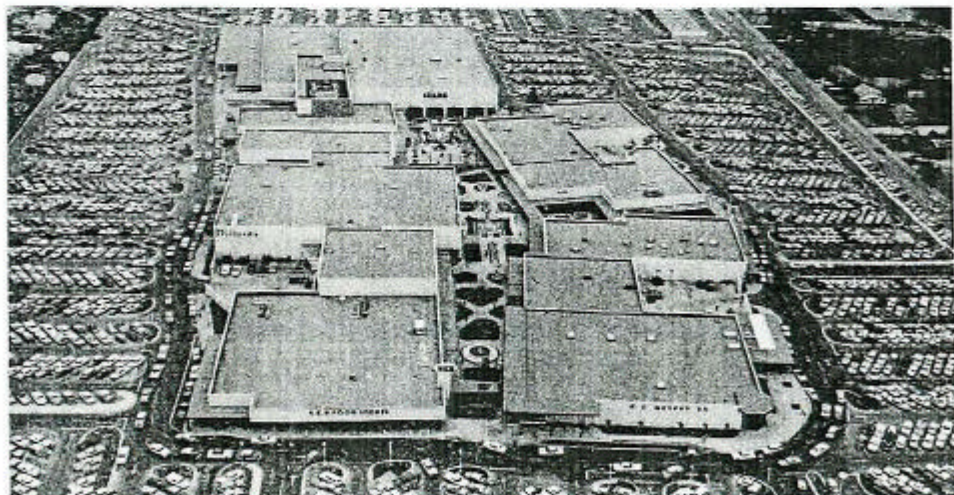
food stores

★ 5 locations to serve you ★



"FOR FINEST
FEMININE FASHIONS"

2904 Guadalupe



HANCOCK CENTER

Out of the Ordinary

41st & INTERREGIONAL



DIRECTOR'S MESSAGE

After a careful and extremely thorough search through musicals, past and present, *ONCE UPON A MATTRESS* became the ninth annual summer musical presented by the Austin Parks and Recreation Department. Somewhat unknown to most Austinites, the freshness, even obscureness, of the show was a good point in its favor. Surprise! A more delectable piece of whimsical theatre for a daylight-savings-time offering was not apparent. Something different was sought; something delightful was found.

With the emphasis on comedy . . . satire and farce . . . *MATTRESS* offered a contrast to the romanticism of *THE KING AND I*, *OKLAHOMA!*, and *BRIGADOON* (the past three year's Zilker musicals). This broad, but gentle, spoof of fairy tales provided a light-hearted escape, unpretentious and palatable, into a vibrant display of fantasy pre-dating *ID* or the *HOBBITS*.

The creative efforts of the company have brought the director's vision to life. This midsummer's night fancy!

Chester Eitze

ACKNOWLEDGEMENTS

Mr. John Bustin
The Austin American-Statesman
Austin Symphony Orchestra
Saint Mary's Academy
International Brotherhood of
Magicians, Ring 60, Austin

KHFI Television and Radio
KTBC Television and Radio
KAZZ Radio
KNOW Radio
KOKE Radio
KVET Radio

The Director wishes to express his personal appreciation to Mr. Beverly S. Sheffield, Director of the Parks and Recreation Department, and the entire staff for their cooperation; also, Fred Scantlin and the City Electrical Maintenance Crew. Special recognition goes to Paul Wells, George Carmona, the late Vernon Fuessel, and the PARD Maintenance Crew as well as the Police Department Photo Lab. Sincere thanks go to the City Printing Division, Carolyn Barkley, and Mrs. Theresa Bown.

8 HOUR SERVICE

Always!

TRAVIS

LAUNDRY & CLEANERS

Travis La Rue • 1200 Red River



Duchess
ice cream

Superior
DAIRIES



Bradford Paint Company

Guadalupe at Fourth

Telephone GR 8-6426



DISTRIBUTORS OF **BUTE** AND *Crown* PAINTS



UTOTEM OF AUSTIN, Inc.

The Nation's Leading
Drive-in Grocers

There's one near you!



Some girls are
sensitive, some
particular, and some,
just downright
hard to please!

If you're any of these
(or just can't sleep on peas),
the store you
should turn to
is the one that
is particular.
About Everything!

SCARBROUGHS

Congress Avenue and Sixth Street, Austin

THE CREATIVE STAFF

CHESTER EITZE, Director

The man at the helm of tonight's production, CHESTER EITZE, is a veteran of all phases of drama. Originally from Austin, he graduated from Travis High, where he was president of the Thespians, school drama group, and vice president of the National Thespians. He received a BA in drama at UT, acting, dancing, and staging countless plays. A veteran of the Curtain Club, Austin Civic Theatre, and Oregon Shakespearean Festival, Mr. Eitze choreographed for KLRN-TV and PARD's "Amahal and the Night Visitors," danced in last year's "The King and I," and has directed for the Austin Junior League and various children's theatre workshops. He is also in demand as a drama lecturer and judge.

STANLEY D. WOODMANSEE

Musical Director-Conductor

STANLEY WOODMANSEE started piano lessons at age 9. He wrote and staged a 25-number musical play during his sophomore year at the University of Connecticut, where he won a degree in music, later a Master's and Ph.D. at UT. He wrote and staged shows for the Air Force during his service. He has been musical director-teacher at the Texas School for the Blind, Cooke County Junior College, UT at El Paso, the Sharon School, and St. Mary's Academy. He has taught at UT and worked on shows for the Drama Department, Curtain Club, Hill Country Arts Foundation (Ingram, Tex.), and Interscholastic League competition.

GENE TRAYLOR, Production Designer

The work of GENE TRAYLOR either covers or robes the entire stage tonight. Mr. Traylor, an all-round theatre pro, hails from Linden, Tex., and received both bachelor's and master's degrees at UT. He has designed and directed shows for the UT Curtain Club, Williams College, and various amateur groups in Dallas. He has acted in UT Drama Department productions and for a Dallas repertory theatre. Mr. Traylor served as lighting designer and technician one year for a summer stock company. He has designed both the sets and costumes for tonight's production.

MARY KAY von BIEBERSTEIN appears as both a dancer and has choreographed several numbers. A clerk-typist at UT's Undergraduate Library, she has danced with the Austin Ballet Society and the Texas Ballet Concerto. While a UT student, she was in the 1964 and 1966 Dance Dramas. Other credits include the Winedale Festival, Oregon Shakespearean Festival, and last year's *The King and I*.

DIANTHA GRIERSON is also a dancer and one of our choreographers. She will be teaching drama and English at Travis High this fall and holds a BFA degree from UT. She danced in the Drama Department's *Take Me Along*, among others and professionally at the Oregon Shakespearean Festival.

MIMI EMORY, Assistant Director

MIMI EMORY is someone infrequently encountered in the theatre: a girl technician. This, coupled with ambition, are contributing factors to her determination to be the best in the field. A graduate of Austin High, she attends UT where her major is scenic design. An example of her work was the set for the Beauty Pageant of last summer's Aqua Festival. Mimi performed in *Take Me Along* and the Winedale Festival. *Once Upon a Mattress* is the fourth PARD musical she has worked for.

HANK MOORE, Public Relations

Designing the program and publicizing the show are the duties of multi-talented HANK MOORE, this being his fourth year in that capacity. Now studying advertising-public relations at UT, Mr. Moore directs public relations for the Students' Association, writes for the Daily Texan, and hosts and produces the weekly UT affairs interview series ("Student Cavalcade," Wed., 11 p.m., KUT-FM). His career in radio dates back to 1958, as a protege of Cactus Pryor. He is University columnist for the Austin American-Statesman, has contributed to the London Times, and has been cited by three national magazines for public affairs efforts. Mr. Moore is a public relations expert, this past year handling two world movie premieres and serving as an advisor to the Austin Aqua Festival. This Austin High alumnus is active in social work, counseling at the Brown Schools.

PAGE ALLEN, Stage Manager

Besides being Stage Manager, PAGE ALLEN has also designed our program and poster artwork and managed our props. From Anapolis, Md., Miss Allen attended St. Stephens High and founded its drama club, winning the top award for her technical skills. She won a BA in studio art and was also active in the Curtain Club while at UT. A veteran of little theatre in California, she is now a staff artist at KLRN-TV and has opened a sculpturing studio, expanding it being her major ambition.

JAMES HILL, Lighting Technician

One of our key technicians, JAMES HILL, is a veteran of the graphics of stage production. A spring graduate of Austin High, he was president of the Red Dragon Players and did technical work on a productions during his years there. He acted in "Thor with Angels" and "Winterset" for Red Dragons and in such as "A Taste of Honey" for the Ben Bard Players. A veteran of the U.S. Marines, he is now teaching creative dramatics for the Office of Equal Opportunity.

"Quiet! Quiet! The Queen insists on quiet!"

In a tiny castle in 1428,

"She's ordered twenty mattresses, the softest and the best,"

In a kingdom held in check,

"She's threatened execution if we dare disturb the rest,"

From chamber, vault, and parapet

"Of her very special guest. She's ordered . . ."

Every princess to inspect.

"Quiet . . . quiet . . . QUIET!"

There is one 15 minute intermission between acts. A collection will be taken.



PEOPLE OUT FOR FUN

ALWAYS ENJOY THEMSELVES WHEN THEY EAT AT . . .

EL MATAMOROS

EL TORO

504 East Avenue

1601 Guadalupe

Home of all the delicious Mexican Food you can eat for \$1.75!

MUSICAL NUMBERS

ACT I

<i>OVERTURE</i>	Orchestra
<i>MANY MOONS AGO (PROLOGUE)</i>	Minstrel
<i>OPENING FOR A PRINCESS</i>	Dauntless, Larken, Court
<i>IN A LITTLE WHILE</i>	Larken, Harry
<i>IN A LITTLE WHILE (REPRISE)</i>	Larken, Harry
<i>SHY</i>	Winnifred, Court
<i>THE MINSTREL, THE JESTER AND I</i>	Minstrel, Jester, King
<i>SENSITIVITY</i>	Queen, Wizard
<i>THE SWAMPS OF HOME</i>	Winnifred, Dauntless, Ladies
<i>THE DANCING LESSON</i>	Orchestra
<i>NORMANDY</i>	Minstrel, Jester, Larken
<i>THE SPANISH PANIC</i>	Orchestra
<i>SONG OF LOVE</i>	Winnifred, Dauntless, Court

ACT II

<i>ENTR-ACTE</i>	Orchestra
<i>QUIET!</i>	Queen, Court
<i>HAPPILY EVER AFTER</i>	Winnifred
<i>MAN-TO-MAN TALK</i>	Dauntless, King
<i>VERY SOFT SHOES</i>	Jester
<i>YESTERDAY I LOVED YOU</i>	Larken, Harry
<i>THE LULLABY</i>	Nightingale
<i>FINALE</i>	Court

*Austin Parks and Recreation Department
Presents*

ANNUAL SUMMER MUSICAL

ZILKER HILLSIDE THEATRE

ONCE UPON A MATTRESS

Book and Lyrics by Jay Thompson, Marshall Barer, and Dean Fuller

Music by Mary Rodgers

A musical spoof of Hans Christian Anderson's

"The Princess and the Pea"

AUGUST 22-26, 1967

Director Chester Eitze
Musical Director-Conductor Stanley Woodmansee
Set Designer Gene Traylor
Lighting Designer James Hill
Costume Designer Gene Traylor
Choreographers Mary Kay von Bieberstein,
Diantha Grierson
Stage Manager Page Allen
Assistant to the Director Mimi Emory
Public Relations Hank Moore

Wardrobe Mistress Michael Haynes
Properties Page Allen
Property Assistant Beth Herring
Costume Assistants Ester Diaz, Joan Ashburne
Lighting Assistants Michael Taylor, Carol Mason
Program—Poster Artwork Page Allen
Photographers Hank Moore, Tony Kramer, Jerry Sockwell

AUSTIN PARKS AND RECREATION DEPARTMENT

Beverly S. Sheffield, Director

Warren G. Leddick, Assistant Director

Roy C. Guerrero, Supt. of Recreation

Dorothy Nan McLean, Sup. of Special Activities

CAST

(In Order of Appearance)

The Minstrel	ED THOMPSON
The Wizard	W. H. CRAIN, JR.
Princess No. 12	DEBBIE HUNT
Lady Larken	JO LYNN WALLER
Jester	JERRY SOCKWELL
Queen Aggravain	CHERI THROOP
Prince Dauntless	DENNY BARNES
King Sextimus	DON MERTON BRASWELL
Lady Lucille	JAN HUDSON
Sir Studley	STEVE DEPUE
Lady Merrill	DIANTHA GRIERSON
Sir Luce	GARY L. COOPER
Lady Beatrice	MARY KAY von BIEBERSTEIN
Sir Harold	BILL SANDERS
Lady Madge	CAROL GRINAKER
Sir First	MAX HAGER
Lady Rowena	CAROLYN KING
Sir Second	ANTHONY KERLEY
Lady La Verne	DEBBIE HUNT
Sir Third	JACK ELLIS
Lady Wench	SHARRON MEANS
Sir Max	JOHN AHERNS
Lady Mabelle	MAGGIE STEBER
Sir Harry	LINDEN INGLIS
Princess Winnifred	SANDRA MATNEY
The Nightingale of Samarkand	SHARRON MEANS
Dream Ballet:	
Princess	MARY KAY von BIEBERSTEIN
Queen	SHARRON MEANS
Prince	BILL SANDERS
Ladies	CAROLYN KING, MAGGIE STEBER
Lords	JACK ELLIS, JOHN AHERNS

ONCE UPON A MATTRESS is presented through special arrangement with Music Theatre International, 119 W. 57 St., New York, N.Y. 10019.

CAST NOTES



SANDRA MATNEY, Princess Winnifred

SANDRA MATNEY as "Fred" will be exhibiting the mad comic flair that won her such roles at Odessa College in *Arms and the Man*, *The Solid Gold Cadillac*, and *The Wizard of Oz*. A senior in drama at UT, Sandra was in *Look Back in Anger*, *The Corpse in the Dressing Room*, and *Toys in the Attic*. After graduation, she would like to teach or work in community theatre, but she wishes to work for an MFA in directing eventually. A collector of clowns, Sandra admits to a *Zorba the Greek* philosophy of life.



DENNY BARNES, Prince Dauntless

DENNY BARNES, a student at Travis High School, has taken the roles in *The Bells Are Ringing*, *The Boy Friend*, and *The Wonder Hat*. Honors for his dramatics include membership in the National Thespian Society and a nomination by the Zachary Scott Theatre Center as "best supporting actor" for his role of the Artful Dodger in last season's *Oliver*. Denny plans to attend Lon Morris and UT and possibly to study in New York in preparation for a career in drama education.



CHERI THROOP, Queen Aggravain

CHERI THROOP would rather act and/or sew than model. A McCallum High alumna, she entered the UT Drama Department and played in *Bartholomew Fair*, *Androcles and the Lion*, *Look Back in Anger*, *Enrico IV*, *Troilus and Cressida*, among others. Having received her BFA in costume design, Cheri has discovered a new enthusiasm: being an authoress. Her first play, *The Jabberwock*, was produced this spring.



DON BRASWELL, King Sextimus

DON BRASWELL, from New Boston, Tex., got a BA in English at UT, a MFA in Drama, and is now pursuing a Ph.D. A playwriting major specializing in mysteryfarces, several of his plays have been produced locally. Don has acted in productions of the Department of Drama, the Curtain Club, the Zachary Scott Theatre Center, and various civic and church groups, and his favorite role to date has been Pandarus in *Troilus and Cressida*. Last summer he appeared in *PARD'S The King and I*.



JO LYNN WALLER, Lady Larken

JO LYNN WALLER, from Vernon, Tex., is a former student of Midwestern University, from which she received a BA in music education. Now completing her Masters at UT where she also serves as a teaching assistant, she is a student of Martha Deatherage. With a repertory including *Così fan tutti*, *Madama Butterfly*, *La Bohème*, and *The Bartered Bride*, Jo Lynn is oriented to opera, but her tastes are diversified enough to encompass many other types of music, ranging from the classical guitar of Segovia to the jazz of Dave Brubeck.



LINDEN INGLIS, Sir Harry

LINDEN INGLIS, of Ft. Worth, has done work in English and journalism at both TCU and UT at Arlington and now works for The Austin American-Statesman. His most recent theatre work was the Curtain Club's staging of *A Taste of Honey*. Before coming to Austin, Linden served as a tutor of basic skills in the constructive civil equality program, Project Vision, in Birmingham, Ala.



JERRY SOCKWELL, Jester

JERRY SOCKWELL of Houston came to the UT Drama Department from Lon Morris. His credits there include *John Brown's Body*, *Julius Caesar*, *Spoon River Anthology*, *West Side Story*, and *The Merchant of Venice*. At UT he was in *Take Me Along*, *Julius Caesar*, *Sinbad the Sailor*, and *Antigone*. Last summer, he was in *The King and I* at Hillside Theatre. A graduate student, he will work for a Master's in directing this fall. A photographer, Jerry is also interested in palmistry, astrology, and collecting glass paperweights.



EDDIE THOMPSON, Minstrel

EDDIE THOMPSON began college at Abilene Christian, then came to UT where he received a BA in English. After a stint as a naval aviator, he is working on a MFA in music literature. Eddie's experience was largely choral and orchestral, in *The Wizard of Oz* and acting in *The Crucible* and *St. Joan*. During his military service, Eddie was stationed in such off-the-Grand-Tour places as Newfoundland and Iceland. This accounts for his interest in antique maps and cartography.



W. H. CRAIN, JR., the Wizard

In the matter of degree, W. H. Crain, has won more of them than most "actors": a BA in English, a MA in history, and a BFA, a MFA and a PhD in Drama. As an actor and playwright he has worked with the Curtain Club, the Department of Drama, Zachary Scott Theatre Center, the American Theatre Wing, and the Artillery Lane Playhouse of St. Augustine, Fla. He was in both of last year's major shows, *Death of a Salesman* and *The King and I*. His produced plays include *Brain*, *and Eggs*, *The Sweet Old Thing*, and various one-acts and children's plays.

LADIES OF THE CHORUS AND THEIR LORDS



BILL SANDERS, a hairdresser, has danced in *The Boy Friend* at the Zachary Scott Theatre Center, the Winedale Festival, and the Zilker Summer Festival '67. Last year he was in *The King and I*.

MARY KAY von BIEBERSTEIN appears as both a dancer and has choreographed several numbers. A clerk-typist at UT's Undergraduate Library, she has danced with the Austin Ballet Society and the Texas Ballet Concerto. While a UT student, she was in the 1964 and 1966 Dance Dramas. Other credits include the Winedale Festival, Oregon Shakespearean Festival, and last year's *The King and I*.

STEVE DEPUE, a graduate of Lon Morris College and a UT student majoring in drama, has appeared locally with the Bijuberti Players and the Curtain Club; presently, he has an eye on professional theatre.

JAN HUDSON, a McCallum senior with a high academic record, is trained in dance and music; her instruments: the piano and guitar. She plans to attend Southwestern University, where she will major in music or French.



GARY L. COOPER, working at the Internal Revenue Service, came from Dallas to Austin to attend St. Edward's University, now at UT majoring in English and philosophy. Gary has developed a professional flair for the theatre with this show.

DIANTHA GRIERSON is also a dancer and one of our choreographers. She will be teaching drama and English at Travis High this fall and holds a BFA degree from UT. She danced in the Drama Department's *Take Me Along*, among others and professionally at the Oregon Shakespearean Festival.

JOHN E. AHRENS, a history major at UT, has acted in the Corpus Christi Little Theatre's *Snikertinick* and *the Giant* and *The Littlest Angel*. In graduate school he will major in business.

SHARRON MEANS is at UT in dance drama, most recently in *The Jabberwock*. Previously she danced with the Texas Ballet Concerto and several exhibition dance groups.

LADIES OF THE CHORUS AND THEIR LORDS



GREGG ANTHONY KERLEY, a graduate of Austin High, is a psychology and sociology student at Tennessee State University. In the AHS Choral Department, he was in *Down in the Valley*, *God's Trombones*, and *Porgy and Bess*.

CAROLYN KING, a member of Austin High's Red Dragons and the dancing Sakimos, has worked with the UT Summer Theatre Project and the June Taylor School of Dance in New York. She has played in *Land of the Dragon*, *HMS Pinafore*, and *Oklahoma*. Carolyn will become either a dancer or an airline stewardess.

JACK ELLIS, who holds a BA in speech and drama from NTST and is now at UT working on a Master's in directing, has worked in Houston's Alley Theatre and community theatres in Ft. Worth and Port Arthur. An actor in 50 plays, director of seven, his favorite shows include *Richard III*, *Enrico IV*, and *Blithe Spirit*.

DEBBIE HUNT sang in the Austin High mixed choir and was production manager for three musicals. Debbie received a voice scholarship to UT and studies voice there. She works at the State Comptroller's Office.



CAROL GRINAKER, a UT psychology major, has set a career for herself in working with emotionally-disturbed children. Also a voice student, she sang in the chorus of *Oklahoma!*, the 1965 Zilke musical.

MAX HAGER is a graduate of Harding College at Searcy, Ark where he was a costume designer for four years and played in *St. Ivo* and *Camelot*. A veteran of two summers in a stock company, Max taught in Gladewater, Tex., and directed *Archy and Mehitabel*, which won State competition in the Interscholastic League One-Act Play Contest for Gladewater.

Featured as Mabelle, a French mademoiselle who makes the best of a limited vocabulary, is MARGARET STEBER. A former member of Austin High's Red Dragons and ex-president of the Blue Jesters at Reagan High, where she graduated this spring, Maggie has played in *Our Town*, *Arsenic and Old Lace*, *Paint Your Wagon*, and *All My Sons*. She appeared in the last two Zilke musicals, *Oklahoma!* and *The King and I* and managed properties for last year's other Zilke major show, *Death of a Salesman*. She will enter Texas Tech this fall in French studies.

"Once Upon A Mattress" Orchestra



The orchestra sections rehearse while the actors block out a scene to the music.

Musical Director-Conductor: STANLEY WOODMANSEE
Rehearsal Accompanist: SARAH MICHEL

ORCHESTRA PERSONNEL

VIOLIN:

Bert Meisenbach
(Concert Master)
Sister Helen Miriam
(C.S.C.)
Linda Mewis
Dee Dee Denn
Janie Applin

VIOLA:

Karol Ann Badgett
Rebecca McIlvain

CELLO:

Clayton Smith
Kathy Badgett

BASS VIOLA:

Jim Schwertner
George Nichol

FLUTE:

Ann Griffin

OBOE:

Jaque Gibson

CLARINET:

Texana Conn

BASS CLARINET:

Wayland Wheeler

FRENCH HORN:

Randy Hall
Robyn Richter

TRUMPET:

Jimmie Gibson
Eddie Davis
John Malcolm Joyce

TROMBONE:

Wade Wilson
Carson Stephens
Gordon Doig

HARP:

Claire Denise Brooks

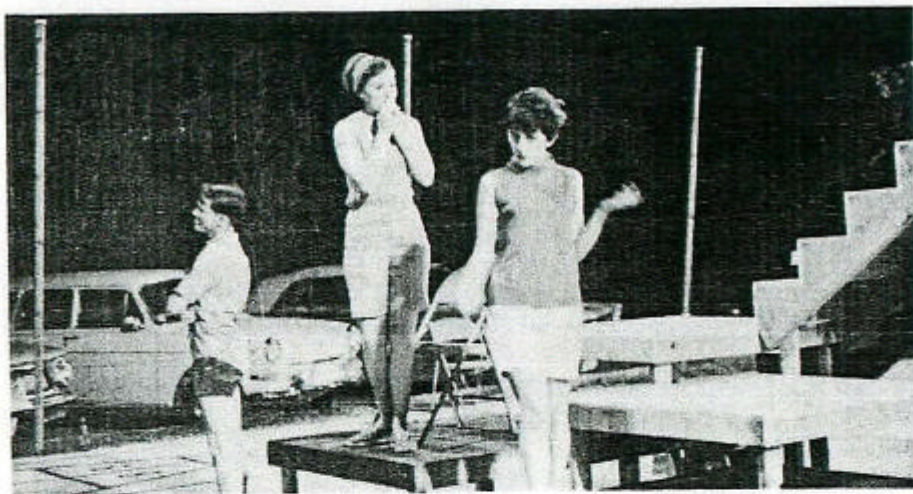
PERCUSSION:

Alex Tradd, II

PIANO:

Don Tharp

THE MAKING OF A PRODUCTION



Denny Barnes, Jo Lynn Waller, and Sandra Matney get the right beat to a "Mattress" scene.



Dancers practice their creative magic. Left: Ed Thompson and Jan Hudson. Right: John Aherans and Sharron Means.



Michael Haynes tirelessly put together the 15th Century costumes displayed in "Mattress."



**INTERREGIONAL AT 53rd
AUSTIN**

**THE
STECK COMPANY**



**IF YOU USE IT
WE PRINT IT!**

The Leading Printer
In The Southwest For
More Than 50 Years.

205 W. 9th St. — Plant—8000 Grist Blvd.

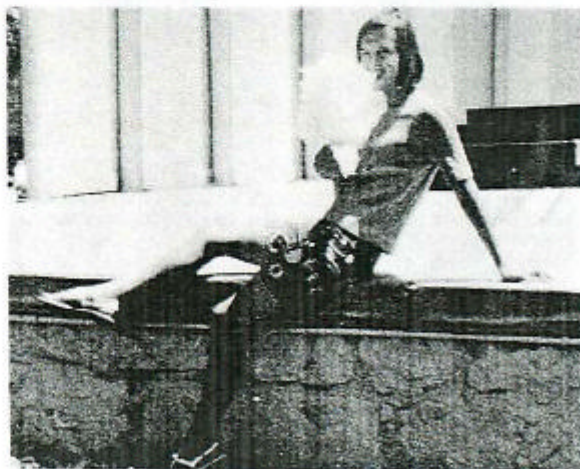
GL 4-4761

FOR REFRESHMENTS . . .

— Across from the Bath House

— Next to the Hillside Theatre

- Cold Drinks
- Popcorn
- Candy
- Hot Dogs
- Potato Chips



JAN HUDSON

**BARTON SPRINGS CONCESSION
STANDS**

NOTES ON "ONCE UPON A MATTRESS"

"Once Upon a Mattress" is based upon the old tale "The Princess and the Pea," told to youngsters.

It tells of a kingdom's search for a princess to marry the prince, no other marriages allowed until this occurs. King Sextimus has been struck dumb by a witch's curse, so Queen Agravaire assumed power, domineering over her son too. The Queen has set up a Royalty Test to select a potential mate for the prince, so tough that it rules out all takers, to no great sorrow of the Queen. Sir Harry finds a true-blooded princess who can hold her own strength in the Queen's attempts to wear her down and discourage her. The final test comes from sleeping on a pile of 20 mattresses, a green pea underneath them, to test the princess' sensitivity, a true sign of royalty by the Queen's standards.

The show was written by Jay Thompson, Marshall Barer, and Dean Fuller in 1958, with music by Mary Rodgers, daughter of theatrical wizard Richard Rodgers. Originally penned for a summer camp presentation, "Mattress" grew, received large financial backing, and opened May 11, 1959, at the Phoenix, Ariz., Theatre, starring Carol Burnett.

Only after a performer's strike did it achieve national recognition, securing for itself a spot off-Broadway and later "on," in a housing four New York theatres. It opened in New York on Nov. 25, 1959, at the Alvin Theatre, closing July 2, 1960, after 460 performances.

Two road companies of "Mattress" toured the nation, featuring Dody Goodman and Imogene Coca starring as Princess Winnifred.

Director Chester Eitze and the Hillside Theatre Company have given "Mattress" a staging all its own, giving brighter luster to the musical than most aforementioned productions to date.

**RYLANDER
SUPERMARKETS**

** Six Friendly Stores to
Serve You **



PAST SUMMER SHOWS

*Zilker Hillside Theatre
Annual Presentations*

1959—"Seventeen"
1960—"Girl Crazy"
1961—"Anything Goes"
1962—"Wildcat"
1963—"Finian's Rainbow"
1964—"Brigadoon"
1965—"Oklahoma"
1966—"Death of a Salesman"
"The King and I"

MONTGOMERY WARD

In Capital Plaza
Shopping Center
GL 2-8161

*Make Ward's your Back-to-School
headquarters for the entire family!*

This Coupon Good for

50c OFF

on the large "Royal" Pizza

THE PIZZA KITCHEN

1201 North Lamar
GR 8-0125

Snyders-Chenards 
Snyderstown • On the drug • Allendale • Dunwoody center

CALCASIEU

BUILDING MATERIALS DEPARTMENT STORE

701 West 5th Street
Phone GR 6-8351


**HANDY
-ANDY**
Supermarkets

"WHERE SHOPPING IS A PLEASURE!"



PRESENTED BY THE CITY OF AUSTIN
PARKS AND RECREATION DEPARTMENT
ZILKER HILLSIDE THEATRE
AUGUST 22-26, 1967 8:45 P.M.
ADMISSION FREE